



Because privacy matters!



# **Kubebooth** **Supply Arrangements with the** **Government of Canada**

SA E60PQ-140003D

Office Furniture for Workspaces - Category 4



## OVERVIEW

GCworkplace is the shared vision for the Government of Canada workplace, established and supported by the Government of Canada Fit-up Standards. GCworkplace guides the delivery of workplace modernization projects and solutions offered by Public Services and Procurement Canada (PSPC) to federal organizations.

The Government of Canada Workplace Fit-up Standards and the supporting tools provide the foundation for creating innovative activity-based work environments. These environments accommodate diverse work styles, meet accessibility requirements, support alternative work strategies, incorporate modern technology, and integrate sustainable design principles.



## GCworkplace Dimensions

FLEXIBLE



01

HEALTHY



02

EFFICIENT



03

INCLUSIVE



04

COLLABORATIVE



05

DIGITAL



06

GREEN



07

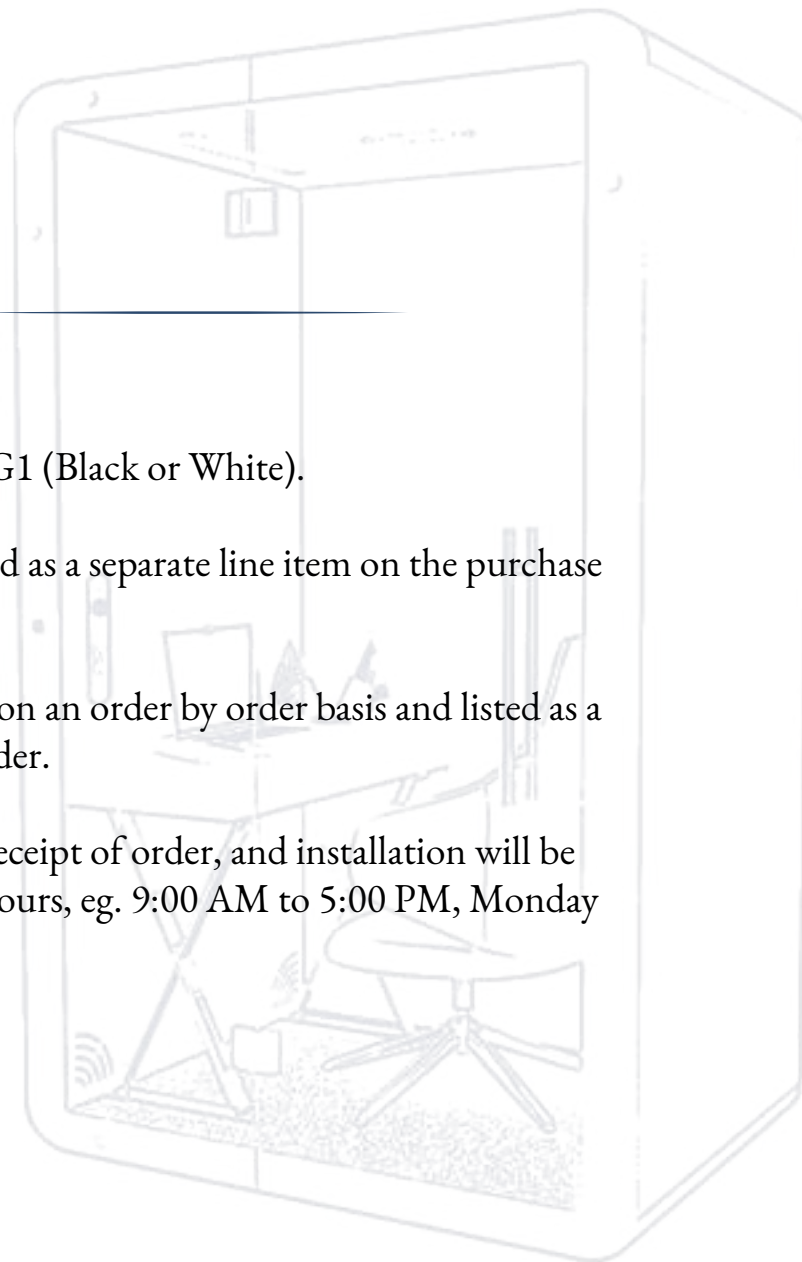
## PRODUCT INFO & ORDERING ITEMS

The exterior finish of all products is G1 (Black or White).

Freight delivery charges are to be listed as a separate line item on the purchase order.

Installation charges are to be quoted on an order by order basis and listed as a separate line item on the purchase order.

Delivery is stated as 3 -5 weeks after receipt of order, and installation will be carried out during normal working hours, eg. 9:00 AM to 5:00 PM, Monday through Friday.



**CALL UPS AGAINST THIS  
SUPPLY ARRANGEMENT  
MUST BE ISSUED TO**

### **KUBEBOOTH INC.**

40 Penn Dr. , Toronto  
Ontario M9L 2A9  
www.kubebooth.com  
info@kubebooth.com

# AUTHORIZED KUBEBOOTH DEALERS



## Atlantic Business Interiors

### Nova Scotia

30 Troop Avenue  
Dartmouth, Nova Scotia  
B3B 1Z1  
Phone: (902) 468-3200  
Fax: (902) 468-5051

### New Brunswick – Moncton

Phone: (506) 866-6738

### New Brunswick – Saint John

28 McIlveen Drive, Unit 12  
Saint John, New Brunswick  
E2J 4Y7  
Phone: (506) 672-0750  
Fax: (506) 674-1435

### Newfoundland and Labrador

21 Mews Place  
St. John's, Newfoundland  
A1B 4N2  
Phone: (709) 576-6405  
Fax: (709) 576-6418

## Atlantic Business Interiors

### Prince Edward Island

25 Fourth Street, Suite 400  
Charlottetown,  
Prince Edward Island  
C1E 2B4  
Phone: (902) 566-9700  
Fax: (902) 566-4978

## Brezach Solutions Inc.

5380 Canotek Rd, Unit 11  
Ottawa, ON, K1J 1H7  
Phone: 613-742-0051  
Email: info@brezach.com

## Capital Office Interiors

16 Antares Drive  
Ottawa, Ontario  
K2E 7Y7  
Phone: (613) 723-2000

## Contemporary Office Interiors

### GTA Distribution Center

Phone 416-364-5111  
Address 6225 Danville Road  
Mississauga,  
ON L5T2H7

### Toronto

Phone 416-364-5111  
Address 56 Temperance St, 2nd Floor  
Toronto, ON M5H 3V5

### Calgary

Phone 403-265-1133  
Fax 403-237-7458  
Address 2206 Portland St SE  
Calgary, AB T2G 4M6

### Edmonton

Phone 780-702-7330  
Fax 780-444-3764  
Address 10520 Jasper Avenue,  
4th Floor  
Edmonton, AB T5J 1Z7

## Contemporary Office Interiors

### Vancouver

Phone 604-683-8300  
Fax 604-683-7001  
Address 2231 Columbia St  
Vancouver, BC V5Y 0M6

### Winnipeg

Phone 204-987-1600  
Fax 204-987-1609  
Address 118 King Edward St E  
Winnipeg,  
MB R3H 0N8

## POI

### Toronto

3389 Steeles Avenue East,  
Unit 120, PO Box #19  
North York, Ontario, M2H 3S8  
Phone: (905) 479-1123  
Fax: (905) 479-6941  
Email: info@poi.ca





# SIGNATURE COLLECTION



## Ki Signature Booth

The Ki Signature Booth by Kubebooth is a premium soundproof solution designed for one person, perfect for virtual meetings, quick calls, and ad hoc discussions.



### STANDARD FEATURES

- 36 dB Certified noise reduction
- 100 air exchanges/hour
- Mobile with casters
- Energy efficient
- Worktop included W: 20" x L: 12"
- BIFMA Level 2 approved
- ISO 14001, ISO 9001, MAS, UL/ULC certified
- Pre-engineered knockout hole for sprinklers
- Plug n Play

**OCCUPANTS:** 1  
**VISUAL PRIVACY:** Low-Medium  
**ACOUSTIC PRIVACY:** High

### TECHNICAL INFO

#### Dimensions:

Overall- W: 44" - D: 37" - H: 88"

Inside- W: 36" - D: 36" - H: 80"

Door - H: 88" x W: 32"

Rear Panel - H: 88" x W: 44"

Front Side Panel - H: 88" x W: 12"

Weight: 800 lbs/362 kg

Data Center: UL approved, 1 USB A port,  
1 USB C port, 2 Simplex outlets  
Motion detector (controls lights & fan)

10mm clear tempered glass  
Ceramic painted borders  
12V LED light bar magnet, 3500k, 12VDC  
Galvanized steel frames  
10ft cord 120v/15Amp  
D pull handle

## RANGE OF FINISHES

### EXTERIOR



White



Black

### CARPET



Light Gray



Dark Gray

### DOOR HANDLE



Black



Silver

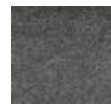
### INTERIOR



EG-04 Silver Gray



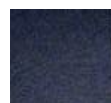
EG-08 Moon Gray



EG-10 Deep Gray



EG-02 Water Gray



EG-20 Deep Blue



EG-23 Turquoise



EG-30 Dark Camel

### ALUMINUM CORNERS



White



Black



Gray

### ADD ONs

Seismic bracing

One-touch LCD control panel

LCD TV mount bracing

White glass board

Personalized company branding

External fire extinguisher unit

Ethernet ports

Bluetooth speakers

Frosted film glass

Occupancy lights



# SIGNATURE COLLECTION



## Ki+ Signature Booth

The Ki+ by Kubebooth is a single-person soundproof office pod designed to enhance productivity and well-being in the workplace. This compact booth provides a private enclave for focused tasks, quick rejuvenation, or uninterrupted learning.



### STANDARD FEATURES

- 36 dB Certified noise reduction
- 100 air exchanges/hour
- Mobile with casters
- Energy efficient
- BIFMA Level 2 approved
- ISO 14001, ISO 9001, MAS, UL/ULC certified
- Pre-engineered knockout hole for sprinklers
- Plug n Play

**OCCUPANTS:** 1  
**VISUAL PRIVACY:** Low-Medium  
**ACOUSTIC PRIVACY:** High

### TECHNICAL INFO

#### Dimensions:

Overall- W: 60" - D: 37" - H: 88"

Inside- W: 50" - D: 36" - H: 80"

Door - H: 88" x W: 32"

Front Side Panel - H: 88" x W: 12"

Weight: 950 lbs/431 kg

Data Center: UL approved, 1 USB A port,  
1 USB C port, 2 Simplex outlets  
Motion detector (controls lights & fan)

10mm clear tempered glass

Ceramic painted borders

12V LED light bar magnet, 3500k, 12VDC

Galvanized steel frames

10ft cord 120v/15Amp

D pull handle



## RANGE OF FINISHES

### EXTERIOR



White



Black

### CARPET



Light Gray



Dark Gray

### DOOR HANDLE



Black



Silver

### INTERIOR



EG-04 Silver Gray



EG-08 Moon Gray



EG-10 Deep Gray



EG-02 Water Gray



EG-20 Deep Blue



EG-23 Turquoise



EG-30 Dark Camel

### ALUMINUM CORNERS



White



Black

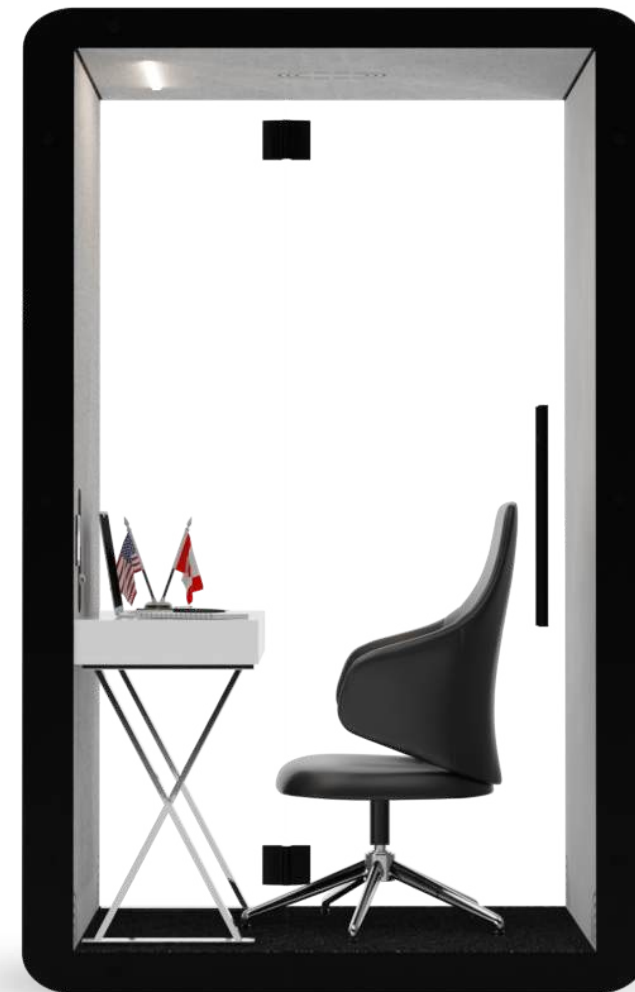


Gray

### ADD ONs

Seismic bracing  
 One-touch LCD control panel  
 LCD TV mount bracing  
 White glass board  
 Personalized company branding  
 External fire extinguisher unit

Ethernet ports  
 Bluetooth speakers  
 Frosted film glass  
 Occupancy lights



# SIGNATURE COLLECTION



## Kme Signature Booth

Compact and sleek, the Kme Signature Booth is a one-person office designed for private, focused work. With superior soundproofing, it's ideal for confidential conversations or deep concentration, making it perfect for any modern workspace.



### STANDARD FEATURES

- 36 dB Certified noise reduction
- 100 air exchanges/hour
- Mobile with casters
- Energy efficient
- BIFMA Level 2 approved
- ISO 14001, ISO 9001, MAS, UL/ULC certified
- Pre-engineered knockout hole for sprinklers
- Plug n Play

**OCCUPANTS:** 1  
**VISUAL PRIVACY:** Low-Medium  
**ACOUSTIC PRIVACY:** High

### TECHNICAL INFO

#### Dimensions:

- Overall- W: 88" - D: 37" - H: 88"
- Inside- W: 80" - D: 36" - H: 80"
- Door - H: 88" x W: 32"
- Front Side Panels - H: 88" x W: 28"
- Rear Panel - H: 88" x W: 44"

Weight: 1200 lbs/544 kg

Data Center: UL approved, 1 USB A port,  
1 USB C port, 2 Simplex outlets  
Motion detector (controls lights & fan)

- 10mm clear tempered glass
- Ceramic painted borders
- 12V LED light bar magnet, 3500k, 12VDC
- Galvanized steel frames
- 10ft cord 120v/15Amp

## RANGE OF FINISHES

### EXTERIOR



White



Black

### CARPET



Light Gray



Dark Gray

### DOOR HANDLE



Black



Silver

### INTERIOR



EG-04 Silver Gray



EG-08 Moon Gray



EG-10 Deep Gray



EG-02 Water Gray



EG-20 Deep Blue



EG-23 Turquoise



EG-30 Dark Camel

### ALUMINUM CORNERS



White



Black



Gray

### ADD ONs

Seismic bracing

One-touch LCD control panel

LCD TV mount bracing

White glass board

Personalized company branding

External fire extinguisher unit

Ethernet ports

Bluetooth speakers

Frosted film glass

Occupancy lights



# SIGNATURE COLLECTION



## Kwe Signature Booth

Designed for flexibility, the Kwe Signature Booth comfortably accommodates 2 people and is extendable to fit 4, 6, or even 8. It offers a spacious, sound-insulated environment for productive meetings or focused collaboration, adaptable to your evolving office needs.



### STANDARD FEATURES

- 36 dB Certified noise reduction
- 100 air exchanges/hour
- Mobile with casters
- Extendable for 4, 6 and 8 people
- Energy efficient
- BIFMA Level 2 approved
- ISO 14001, ISO 9001, MAS, UL/ULC certified
- Pre-engineered knockout hole for sprinklers
- Plug n Play

**OCCUPANTS:** 2  
**VISUAL PRIVACY:** Low-Medium  
**ACOUSTIC PRIVACY:** High

### TECHNICAL INFO

#### Dimensions:

- Overall- W: 88" - D: 37" - H: 88"
- Inside- W: 80" - D: 36" - H: 80"
- Door - H: 88" x W: 32"
- Front Side Panels - H: 88" x W: 28"
- Rear Panel - H: 88" x W: 44"

Weight: 1200 lbs/544 kg

Data Center: UL approved, 1 USB A port, 1 USB C port, 2 Simplex outlets  
Motion detector (controls lights & fan)

- 10mm clear tempered glass
- Ceramic painted borders
- 12V LED light bar magnet, 3500k, 12VDC
- Galvanized steel frames
- 10ft cord 120v/15Amp

## RANGE OF FINISHES

### EXTERIOR



White



Black

### CARPET



Light Gray



Dark Gray

### DOOR HANDLE



Black



Silver

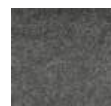
### INTERIOR



EG-04 Silver Gray



EG-08 Moon Gray



EG-10 Deep Gray



EG-02 Water Gray



EG-20 Deep Blue



EG-23 Turquoise



EG-30 Dark Camel

### ALUMINUM CORNERS



White



Black



Gray

### ADD ONs

Seismic bracing

One-touch LCD control panel

LCD TV mount bracing

White glass board

Personalized company branding

External fire extinguisher unit

Ethernet ports

Bluetooth speakers

Frosted film glass

Occupancy lights





# SIGNATURE COLLECTION



## Kwe Plus Signature Booth

The Kwe Plus Signature Booth is perfect for groups of 2-4 people, offering a spacious yet private area for meetings, brainstorming sessions, or team collaboration. Its soundproof design ensures quiet and comfort, making it a stylish and practical addition to any workspace.



### STANDARD FEATURES

- 36 dB Certified noise reduction
- 100 air exchanges/hour
- Mobile with casters
- Extendable for 6 and 8 people
- Energy efficient
- BIFMA Level 2 approved
- ISO 14001, ISO 9001, MAS, UL/ULC certified
- Pre-engineered knockout hole for sprinklers
- Plug n Play

**OCCUPANTS:** 2-4  
**VISUAL PRIVACY:** Low-Medium  
**ACOUSTIC PRIVACY:** High

### TECHNICAL INFO

#### Dimensions:

Overall- W: 88" - D: 48" - H: 88"  
Inside- W: 80" - D: 47" - H: 80"  
Door - H: 88" x W: 32"  
Front Side Panels - H: 88" x W: 28"  
Rear Panel - H: 88" x W: 44"

Weight: 1525 lbs/692 kg

Data Center: UL approved, 1 USB A port,  
1 USB C port, 2 Simplex outlets  
Motion detector (controls lights & fan)

10mm clear tempered glass  
Ceramic painted borders  
12V LED light bar magnet, 3500k, 12VDC  
Galvanized steel frames  
10ft cord 120v/15Amp

## RANGE OF FINISHES

### EXTERIOR



White



Black

### CARPET



Light Gray



Dark Gray

### DOOR HANDLE



Black



Silver

### INTERIOR



EG-04 Silver Gray



EG-08 Moon Gray



EG-10 Deep Gray



EG-02 Water Gray



EG-20 Deep Blue



EG-23 Turquoise



EG-30 Dark Camel

### ALUMINUM CORNERS



White



Black



Gray

### ADD ONs

Seismic bracing  
 One-touch LCD control panel  
 LCD TV mount bracing  
 White glass board  
 Personalized company branding  
 External fire extinguisher unit

Ethernet ports  
 Bluetooth speakers  
 Frosted film glass  
 Occupancy lights



# SIGNATURE COLLECTION



## Kteam 4 Signature Booth

The Kteam by KubeBooth is a spacious, extendable office pod designed for collaboration, providing superior sound insulation and air quality control for productive team interactions.



### STANDARD FEATURES

- 36 dB Certified noise reduction
- 100 air exchanges/hour
- Mobile with casters
- Extendable for 6 and 8 people
- Energy efficient
- BIFMA Level 2 approved
- ISO 14001, ISO 9001, MAS, UL/ULC certified
- Pre-engineered knockout hole for sprinklers
- Plug n Play

**OCCUPANTS:** 4  
**VISUAL PRIVACY:** Low-Medium  
**ACOUSTIC PRIVACY:** High

### TECHNICAL INFO

#### Dimensions:

- Overall- W: 88" - D: 73" - H: 88"
- Inside- W: 80" - D: 72" - H: 80"
- Door - H: 88" x W: 32"
- Front Side Panels - H: 88" x W: 28"
- Rear Panel - H: 88" x W: 44"

**Weight:** 1800 lbs/816 kg

**Data Center:** UL approved, 1 USB A port, 1 USB C port, 2 Simplex outlets  
**Motion detector** (controls lights & fan)

- 10mm clear tempered glass
- Ceramic painted borders
- 12V LED light bar magnet, 3500k, 12VDC
- Galvanized steel frames
- 10ft cord 120v/15Amp

## RANGE OF FINISHES

### EXTERIOR



White



Black

### CARPET



Light Gray



Dark Gray

### DOOR HANDLE



Black



Silver

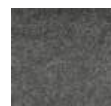
### INTERIOR



EG-04 Silver Gray



EG-08 Moon Gray



EG-10 Deep Gray



EG-02 Water Gray



EG-20 Deep Blue



EG-23 Turquoise



EG-30 Dark Camel

### ALUMINUM CORNERS



White



Black



Gray

### ADD ONs

Seismic bracing

One-touch LCD control panel

LCD TV mount bracing

White glass board

Personalized company branding

External fire extinguisher unit

Ethernet ports

Bluetooth speakers

Frosted film glass

Occupancy lights



# SIGNATURE COLLECTION



## Kteam 6 Signature Booth

Experience enhanced collaboration in the Kteam 6, a soundproof meeting pod designed for six, featuring easy plug-and-play installation and customizable finishes to match your office decor.



### STANDARD FEATURES

- 36 dB Certified noise reduction
- 100 air exchanges/hour
- Mobile with casters
- Extendable for 8 people
- Energy efficient
- BIFMA Level 2 approved
- ISO 14001, ISO 9001, MAS,
- UL/ULC certified
- Pre-engineered knockout hole for sprinklers
- Plug n Play

**OCCUPANTS:** 6  
**VISUAL PRIVACY:** Low-Medium  
**ACOUSTIC PRIVACY:** High

### TECHNICAL INFO

#### Dimensions:

Overall- W: 88" - D: 109" - H: 88"

Inside- W: 80" - D: 108" - H: 80"

Door - H: 88" x W: 32"

Front Side Panels - H: 88" x W: 28"

Rear Panel - H:88" x W: 44"

Weight: 2400 lbs/1089 kg

Data Center: UL approved, 1 USB A port,  
1 USB C port, 2 Simplex outlets  
Motion detector (controls lights & fan)

10mm clear tempered glass  
Ceramic painted borders  
12V LED light bar magnet, 3500k, 12VDC  
Galvanized steel frames  
10ft cord 120v/15Amp



## RANGE OF FINISHES

### EXTERIOR



White



Black

### CARPET



Light Gray



Dark Gray

### DOOR HANDLE



Black



Silver

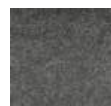
### INTERIOR



EG-04 Silver Gray



EG-08 Moon Gray



EG-10 Deep Gray



EG-02 Water Gray



EG-20 Deep Blue



EG-23 Turquoise



EG-30 Dark Camel

### ALUMINUM CORNERS



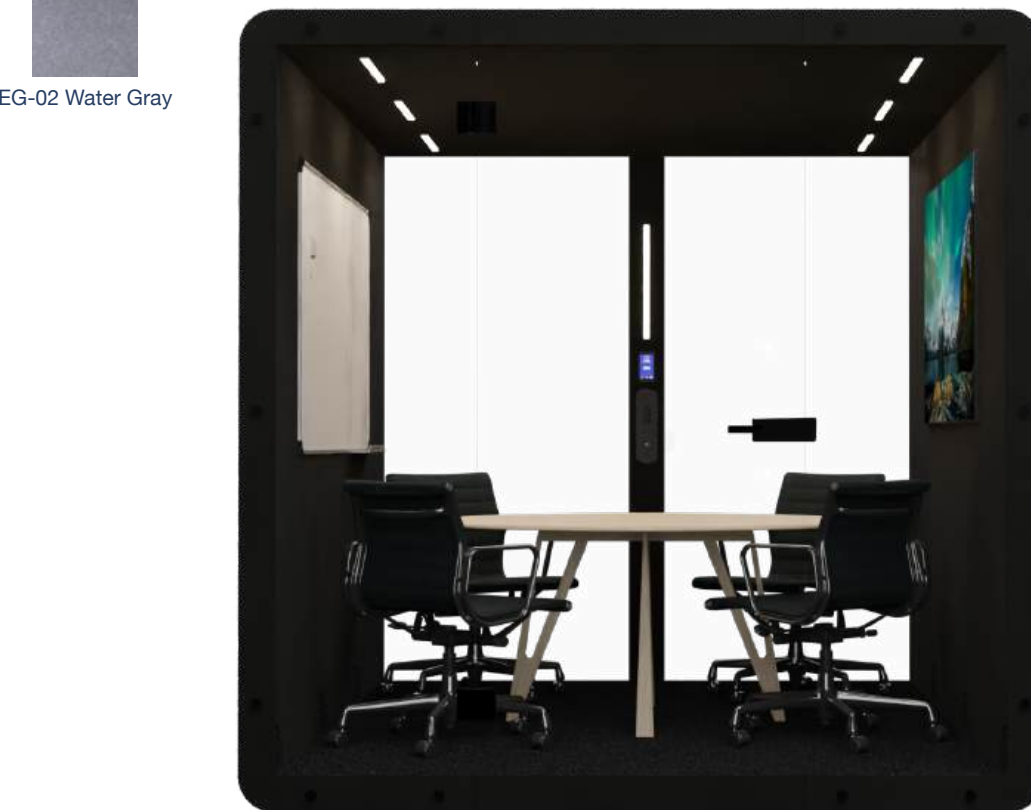
White



Black



Gray



### ADD ONs

Seismic bracing

One-touch LCD control panel

LCD TV mount bracing

White glass board

Personalized company branding

External fire extinguisher unit

Ethernet ports

Bluetooth speakers

Frosted film glass

Occupancy lights

# SIGNATURE COLLECTION



## Kteam 8 Signature Booth

The Kteam 8 signature booth by Kubebooth is an expandable meeting pod designed for up to 8 users, perfect for collaborative discussions, conferences, and brainstorming sessions.



### STANDARD FEATURES

- 36 dB Certified noise reduction
- 100 air exchanges/hour
- Mobile with casters
- Energy efficient
- BIFMA Level 2 approved
- ISO 14001, ISO 9001, MAS,
- UL/ULC certified
- Pre-engineered knockout hole for sprinklers
- Plug n Play

**OCCUPANTS: 8**  
**VISUAL PRIVACY: Low-Medium**  
**ACOUSTIC PRIVACY: High**

### TECHNICAL INFO

#### Dimensions:

Overall- W: 88" - D: 145" - H: 88"

Inside- W: 80" - D: 144" - H: 80"

Door - H: 88" x W: 32"

Front Side Panels - H: 88" x W: 28"

Rear Panel - H:88" x W: 44"

Weight: 3000 lbs/1361 kg

Data Center: UL approved, 1 USB A port,  
1 USB C port, 2 Simplex outlets

Motion detector (controls lights & fan)

10mm clear tempered glass

Ceramic painted borders

12V LED light bar magnet, 3500k, 12VDC

Galvanized steel frames

10ft cord 120v/15Amp

## RANGE OF FINISHES

### EXTERIOR



White



Black

### CARPET



Light Gray



Dark Gray

### DOOR HANDLE



Black



Silver

### INTERIOR



EG-04 Silver Gray



EG-08 Moon Gray



EG-10 Deep Gray



EG-02 Water Gray



EG-20 Deep Blue



EG-23 Turquoise



EG-30 Dark Camel

### ALUMINUM CORNERS



White



Black



Gray



### ADD ONs

Seismic bracing  
 One-touch LCD control panel  
 LCD TV mount bracing  
 White glass board  
 Personalized company branding  
 External fire extinguisher unit

Ethernet ports  
 Bluetooth speakers  
 Frosted film glass  
 Occupancy lights





# ACCESSORIES



- TOUCHPAD WITH FACELIGHT CONTROL PANEL

- OCCUPANCY LIGHTS

- SEISMIC BRACING

- LCD TV MOUNT BRACKET

- WHITE GLASS BOARD

- ETHERNET PORTS

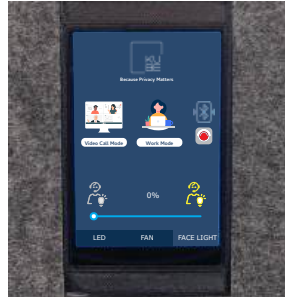
- PERSONALIZED COMPANY BRANDING

- BLUETOOTH SPEAKERS

- FROSTED FILM GLASS

- EXTERNAL FIRE EXTINGUISHER UNIT

- SMART DOOR LOCK\*  
(Only available on select units)



Touchpad



Occupancy Lights



LCD TV Mount Bracket



Smart Lock



Whiteboard



Bluetooth Speaker



# FLOORLESS COLLECTION



## Ki Floorless Booth

The Ki Floorless Booth offers a sleek, soundproof workspace with step-free entry, ensuring accessibility for all users while providing privacy and productivity in any office setting.



### STANDARD FEATURES

- Class A noise reduction
- 100 air exchanges/hour
- Energy efficient
- Worktop included W: 20" x L: 12"
- BIFMA Level 2 approved
- ISO 14001, ISO 9001, MAS, UL/ULC certified
- Pre-engineered knockout hole for sprinklers
- Plug n Play

**OCCUPANTS:** 1  
**VISUAL PRIVACY:** Low-Medium  
**ACOUSTIC PRIVACY:** Medium-High

### TECHNICAL INFO

#### Dimensions:

Overall- W: 44" - D: 37" - H: 88"

Inside- W: 36" - D: 36" - H: 84"

Door - H: 88" x W: 32"

Rear Panel - H: 88" x W: 44"

Front Side Panel - H: 88" x W: 12"

Weight: 750 lbs/340 kg

Data Center: UL approved, 1 USB A port,  
1 USB C port, 2 Simplex outlets  
Motion detector (controls lights & fan)

10mm clear tempered glass  
Ceramic painted borders  
12V LED light bar magnet, 3500k, 12VDC  
Galvanized steel frames  
10ft cord 120v/15Amp

## RANGE OF FINISHES

### EXTERIOR



White



Black

### CARPET



Light Gray



Dark Gray

### DOOR HANDLE



Black



Silver

### INTERIOR



EG-04 Silver Gray



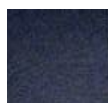
EG-08 Moon Gray



EG-10 Deep Gray



EG-02 Water Gray



EG-20 Deep Blue



EG-23 Turquoise



EG-30 Dark Camel

### ALUMINUM CORNERS



White



Black



Gray

### ADD ONs

Seismic bracing  
 One-touch LCD control panel  
 LCD TV mount bracing  
 White glass board  
 Personalized company branding  
 External fire extinguisher unit

Ethernet ports  
 Bluetooth speakers  
 Frosted film glass  
 Occupancy lights



# FLOORLESS COLLECTION



## Ki+ Floorless Booth

The Ki+ Floorless Booth offers a spacious, soundproof environment for virtual meetings and focused work, designed for accessibility and comfort while seamlessly integrating into any office aesthetic.



### STANDARD FEATURES

- Class A noise reduction
- 100 air exchanges/hour
- Energy efficient
- BIFMA Level 2 approved
- ISO 14001, ISO 9001, MAS, UL/ULC certified
- Pre-engineered knockout hole for sprinklers
- Plug n Play

**OCCUPANTS:** 1  
**VISUAL PRIVACY:** Low-Medium  
**ACOUSTIC PRIVACY:** Medium-High

### TECHNICAL INFO

#### Dimensions:

- Overall- W: 60" - D: 37" - H: 88"
- Inside- W: 50" - D: 36" - H: 84"
- Door - H: 88" x W: 32"
- Rear Panel - H: 88" x W: 44"
- Front Side Panel - H: 88" x W: 12"

Weight: 900 lbs/408 kg

Data Center: UL approved, 1 USB A port,  
1 USB C port, 2 Simplex outlets  
Motion detector (controls lights & fan)

- 10mm clear tempered glass
- Ceramic painted borders
- 12V LED light bar magnet, 3500k, 12VDC
- Galvanized steel frames
- 10ft cord 120v/15Amp

## RANGE OF FINISHES

### EXTERIOR



White



Black

### CARPET



Light Gray



Dark Gray

### DOOR HANDLE



Black



Silver

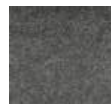
### INTERIOR



EG-04 Silver Gray



EG-08 Moon Gray



EG-10 Deep Gray



EG-02 Water Gray



EG-20 Deep Blue

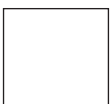


EG-23 Turquoise



EG-30 Dark Camel

### ALUMINUM CORNERS



White



Black



Gray

### ADD ONs

Seismic bracing  
 One-touch LCD control panel  
 LCD TV mount bracing  
 White glass board  
 Personalized company branding  
 External fire extinguisher unit

Ethernet ports  
 Bluetooth speakers  
 Frosted film glass  
 Occupancy lights



# FLOORLESS COLLECTION



## Kme Floorless Booth

The Kme Floorless Booth is a premium single-user pod designed for inclusivity and productivity, featuring advanced noise reduction technology that ensures a serene workspace free from distractions.



### STANDARD FEATURES

- Class A noise reduction
- 100 air exchanges/hour
- Energy efficient
- BIFMA Level 2 approved
- ISO 14001, ISO 9001, MAS, UL/ULC certified
- Pre-engineered knockout hole for sprinklers
- Plug n Play

**OCCUPANTS: 1**  
**VISUAL PRIVACY: Low-Medium**  
**ACOUSTIC PRIVACY: Medium-High**

### TECHNICAL INFO

#### Dimensions:

- Overall- W: 88" - D: 37" - H: 88"
- Inside- W: 80" - D: 36" - H: 84"
- Door - H: 88" x W: 32"
- Rear Panel - H: 88" x W: 44"
- Front Side Panels - H: 88" x W: 28"

Weight: 1100 lbs/500 kg

Data Center: UL approved, 1 USB A port,  
1 USB C port, 2 Simplex outlets  
Motion detector (controls lights & fan)

- 10mm clear tempered glass
- Ceramic painted borders
- 12V LED light bar magnet, 3500k, 12VDC
- Galvanized steel frames
- 10ft cord 120v/15Amp



## RANGE OF FINISHES

### EXTERIOR



White



Black

### CARPET



Light Gray



Dark Gray

### DOOR HANDLE



Black



Silver

### INTERIOR



EG-04 Silver Gray



EG-08 Moon Gray



EG-10 Deep Gray



EG-02 Water Gray



EG-20 Deep Blue



EG-23 Turquoise



EG-30 Dark Camel

### ALUMINUM CORNERS



White



Black



Gray

### ADD ONs

Seismic bracing  
 One-touch LCD control panel  
 LCD TV mount bracing  
 White glass board  
 Personalized company branding  
 External fire extinguisher unit

Ethernet ports  
 Bluetooth speakers  
 Frosted film glass  
 Occupancy lights



# FLOORLESS COLLECTION



## Kwe Floorless Booth

Experience exceptional teamwork in the Kwe Floorless Booth, designed for two users, for seamless collaboration in a spacious, soundproof pod.



### STANDARD FEATURES

- Class A noise reduction
- 100 air exchanges/hour
- Extendable for 4, 6 and 8 people
- Energy efficient
- BIFMA Level 2 approved
- ISO 14001, ISO 9001, MAS, UL/ULC certified
- Pre-engineered knockout hole for sprinklers
- Plug n Play

**OCCUPANTS:** 2  
**VISUAL PRIVACY:** Low-Medium  
**ACOUSTIC PRIVACY:** Medium-High

### TECHNICAL INFO

#### Dimensions:

- Overall- W: 88" - D: 37" - H: 88"
- Inside- W: 80" - D: 36" - H: 84"
- Door - H: 88" x W: 32"
- Rear Panel - H: 88" x W: 44"
- Front Side Panels - H: 88" x W: 28"

Weight: 1100 lbs/500 kg

Data Center: UL approved, 1 USB A port,  
1 USB C port, 2 Simplex outlets  
Motion detector (controls lights & fan)

- 10mm clear tempered glass
- Ceramic painted borders
- 12V LED light bar magnet, 3500k, 12VDC
- Galvanized steel frames
- 10ft cord 120v/15Amp

## RANGE OF FINISHES

### EXTERIOR



White



Black

### CARPET



Light Gray



Dark Gray

### DOOR HANDLE



Black



Silver

### INTERIOR



EG-04 Silver Gray



EG-08 Moon Gray



EG-10 Deep Gray



EG-02 Water Gray



EG-20 Deep Blue



EG-23 Turquoise



EG-30 Dark Camel

### ALUMINUM CORNERS



White



Black



Gray

### ADD ONs

Seismic bracing

One-touch LCD control panel

LCD TV mount bracing

White glass board

Personalized company branding

External fire extinguisher unit

Ethernet ports

Bluetooth speakers

Frosted film glass

Occupancy lights



# FLOORLESS COLLECTION



## Kwe Plus Floorless Booth

Enhance teamwork with the Kwe Plus Floorless Booth, designed for 2-4 users, offering customizable finishes, advanced connectivity options, and a serene environment for productive discussions.



### STANDARD FEATURES

- Class A noise reduction
- 100 air exchanges/hour
- Extendable for 6 and 8 people
- Energy efficient
- BIFMA Level 2 approved
- ISO 14001, ISO 9001, MAS, UL/ULC certified
- Pre-engineered knockout hole for sprinklers
- Plug n Play

**OCCUPANTS:** 2-4  
**VISUAL PRIVACY:** Low-Medium  
**ACOUSTIC PRIVACY:** Medium-High

### TECHNICAL INFO

#### Dimensions:

- Overall- W: 88" - D: 48" - H: 88"
- Inside- W: 80" - D: 47" - H: 84"
- Door - H: 88" x W: 32"
- Rear Panel - H: 88" x W: 44"
- Front Side Panels - H: 88" x W: 28"

Weight: 1150 lbs/527 kg

Data Center: UL approved, 1 USB A port,  
1 USB C port, 2 Simplex outlets  
Motion detector (controls lights & fan)

- 10mm clear tempered glass
- Ceramic painted borders
- 12V LED light bar magnet, 3500k, 12VDC
- Galvanized steel frames
- 10ft cord 120v/15Amp

## RANGE OF FINISHES

### EXTERIOR



White



Black

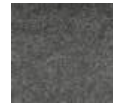
### INTERIOR



EG-04 Silver Gray



EG-08 Moon Gray



EG-10 Deep Gray



EG-02 Water Gray

### CARPET



Light Gray



Dark Gray



EG-20 Deep Blue



EG-23 Turquoise



EG-30 Dark Camel

### ALUMINUM CORNERS



White



Black



Gray

### DOOR HANDLE



Black



Silver

### ADD ONs

Seismic bracing

One-touch LCD control panel

LCD TV mount bracing

White glass board

Personalized company branding

External fire extinguisher unit

Ethernet ports

Bluetooth speakers

Frosted film glass

Occupancy lights





# FLOORLESS COLLECTION



## Kteam 4 Floorless Booth

The Kteam 4 Floorless Booth provides an inviting workspace for 4 people, combining superior sound insulation with energy-efficient lighting and customizable finishes options to fit any office aesthetic.



### STANDARD FEATURES

- Class A noise reduction
- 100 air exchanges/hour
- Extendable for 6 and 8 people
- Energy efficient
- BIFMA Level 2 approved
- ISO 14001, ISO 9001, MAS, UL/ULC certified
- Pre-engineered knockout hole for sprinklers
- Plug n Play

**OCCUPANTS:** 4  
**VISUAL PRIVACY:** Low-Medium  
**ACOUSTIC PRIVACY:** Medium-High

### TECHNICAL INFO

#### Dimensions:

- Overall- W: 88" - D: 73" - H: 88"
- Inside- W: 80" - D: 72" - H: 84"
- Door - H: 88" x W: 32"
- Rear Panel - H: 88" x W: 44"
- Front Side Panels - H: 88" x W: 28"

Weight: 1600 lbs/726 kg

Data Center: UL approved, 1 USB A port,  
1 USB C port, 2 Simplex outlets  
Motion detector (controls lights & fan)

- 10mm clear tempered glass
- Ceramic painted borders
- 12V LED light bar magnet, 3500k, 12VDC
- Galvanized steel frames
- 10ft cord 120v/15Amp

## RANGE OF FINISHES

### EXTERIOR



White



Black

### CARPET



Light Gray



Dark Gray

### DOOR HANDLE



Black



Silver

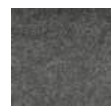
### INTERIOR



EG-04 Silver Gray



EG-08 Moon Gray



EG-10 Deep Gray



EG-02 Water Gray



EG-20 Deep Blue



EG-23 Turquoise



EG-30 Dark Camel

### ALUMINUM CORNERS



White



Black



Gray

### ADD ONs

Seismic bracing

One-touch LCD control panel

LCD TV mount bracing

White glass board

Personalized company branding

External fire extinguisher unit

Ethernet ports

Bluetooth speakers

Frosted film glass

Occupancy lights



# FLOORLESS COLLECTION



## Kteam 6 Floorless Booth

Enhance productivity with the Kteam 6 Floorless Booth, a modern, soundproof pod for six that combines functionality with stylish design and easy plug-and-play setup.



### STANDARD FEATURES

- Class A noise reduction
- 100 air exchanges/hour
- Extendable for 8 people
- Energy efficient
- BIFMA Level 2 approved
- ISO 14001, ISO 9001, MAS, UL/ULC certified
- Pre-engineered knockout hole for sprinklers
- Plug n Play

**OCCUPANTS:** 6  
**VISUAL PRIVACY:** Low-Medium  
**ACOUSTIC PRIVACY:** Medium-High

### TECHNICAL INFO

#### Dimensions:

- Overall- W: 88" - D: 109" - H: 88"
- Inside- W: 80" - D: 108" - H: 84"
- Door - H: 88" x W: 32"
- Rear Panel - H: 88" x W: 44"
- Front Side Panels - H: 88" x W: 28"

Weight: 2100 lbs/953 kg

Data Center: UL approved, 1 USB A port,  
1 USB C port, 2 Simplex outlets  
Motion detector (controls lights & fan)

- 10mm clear tempered glass
- Ceramic painted borders
- 12V LED light bar magnet, 3500k, 12VDC
- Galvanized steel frames
- 10ft cord 120v/15Amp

## RANGE OF FINISHES

### EXTERIOR



White



Black

### INTERIOR



EG-04 Silver Gray



EG-08 Moon Gray



EG-10 Deep Gray



EG-02 Water Gray

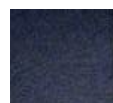
### CARPET



Light Gray



Dark Gray



EG-20 Deep Blue



EG-23 Turquoise



EG-30 Dark Camel

### ALUMINUM CORNERS



White



Black



Gray

### DOOR HANDLE



Black



Silver

### ADD ONs

Seismic bracing

One-touch LCD control panel

LCD TV mount bracing

White glass board

Personalized company branding

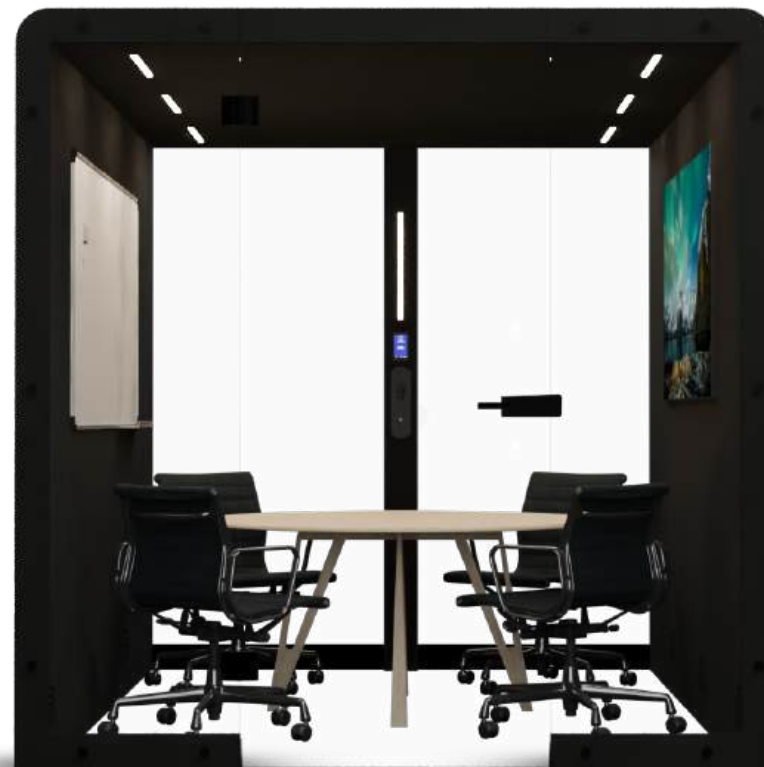
External fire extinguisher unit

Ethernet ports

Bluetooth speakers

Frosted film glass

Occupancy lights



# FLOORLESS COLLECTION



## Kteam 8 Floorless Booth

The Kteam 8 Floorless Booth is a versatile meeting space for eight individuals, combining superior sound insulation with a stylish design to create an inviting atmosphere for effective teamwork and discussions.



### STANDARD FEATURES

- Class A noise reduction
- 100 air exchanges/hour
- Energy efficient
- BIFMA Level 2 approved
- ISO 14001, ISO 9001, MAS, UL/ULC certified
- Pre-engineered knockout hole for sprinklers
- Plug n Play

**OCCUPANTS:** 8  
**VISUAL PRIVACY:** Low-Medium  
**ACOUSTIC PRIVACY:** Medium-High

### TECHNICAL INFO

#### Dimensions:

- Overall- W: 88" - D: 145" - H: 88"
- Inside- W: 80" - D: 144" - H: 84"
- Door - H: 88" x W: 32"
- Rear Panel - H: 88" x W: 44"
- Front Side Panels - H: 88" x W: 28"

Weight: 2600 lbs/1180 kg

Data Center: UL approved, 1 USB A port,  
1 USB C port, 2 Simplex outlets  
Motion detector (controls lights & fan)

- 10mm clear tempered glass
- Ceramic painted borders
- 12V LED light bar magnet, 3500k, 12VDC
- Galvanized steel frames
- 10ft cord 120v/15Amp



## RANGE OF FINISHES

### EXTERIOR



White



Black

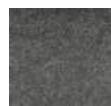
### INTERIOR



EG-04 Silver Gray



EG-08 Moon Gray



EG-10 Deep Gray



EG-02 Water Gray

### CARPET



Light Gray



Dark Gray



EG-20 Deep Blue



EG-23 Turquoise



EG-30 Dark Camel

### ALUMINUM CORNERS



White



Black



Gray

### DOOR HANDLE



Black



Silver

### ADD ONs

Seismic bracing

One-touch LCD control panel

LCD TV mount bracing

White glass board

Personalized company branding

External fire extinguisher unit

Ethernet ports

Bluetooth speakers

Frosted film glass

Occupancy lights









Because privacy matters!

[www.kubebooth.com](http://www.kubebooth.com) | [info@kubebooth.com](mailto:info@kubebooth.com)

