



Because Privacy Matters

Product Catalogue



About Us



Kubebooth was founded because of our core belief that *privacy matters!*

We believe that everyone should have access to a private space where they are free to be their most authentic selves. That is why we developed our signature Kubebooth Collection - a set of prefabricated modular booths designed for optimal acoustic performance and new floorless collection for enhanced accessibility. Our booths provide a quick, simple and affordable solution to the lack of privacy common in workspaces.



Key Features



36 dB NOISE CANCELLATION

With certified sound insulation system of 36 dB, we can honestly say that we provide you with the best soundproof booth that guarantees privacy.

FRESH AIR SUPPLY

Our booths deliver exceptional fresh air supply, with 100 air exchanges per hour, ensuring a workspace that far exceeds expectations and regulations.



ACCESSIBLE

Our inclusive design promotes an environment where everyone belongs.

EXTENDABLE

Our adaptable modular design smoothly transitions from a two-person setup to configurations for four, six, or eight, effortlessly keeping pace with your changing needs.



MOBILITY

Our signature collection comes equipped with hidden casters to enable quick changes in a fast-paced world.

Key Features



PLUG & PLAY

Experience seamless setup with our plug-and-play booths; no construction or electricians needed. Simply connect to power and you're ready to go, hassle-free.

EFFICIENT - MOTION ACTIVATED

The LED lights and fans are motion activated as you step into the booth.

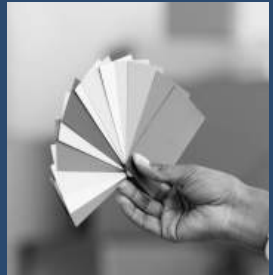


ENVIRONMENT FRIENDLY

We use CNC machinery to precisely cut and shape our products, minimizing material waste. Our products meet GreenGuard indoor air quality standards and are made with recycled metal and responsibly sourced wood to ensure sustainability.

CUSTOMIZABLE

We provide a wide variety of exterior and interior finishes, so you can truly personalize your booth and match the aesthetic of your workspace.



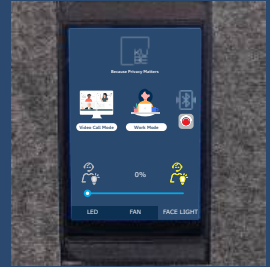
RAPID LEAD TIME

Our dedicated team's hard work allows us to proudly offer a lead time of 3-4 weeks.

Accessories



TOUCHSCREEN WITH FACELIGHT CONTROL PANEL



OCCUPANCY LIGHTS

SEISMIC BRACING

LCD TV MOUNT BRACKET

WHITE GLASS BOARD

ETHERNET PORTS

PERSONALIZED COMPANY BRANDING

BLUETOOTH SPEAKERS

FROSTED FILM GLASS

EXTERNAL FIRE EXTINGUISHER UNIT

SMART DOOR LOCK*

(Only available on select units)

AUTOMATIC DOOR OPENER



Our Signature Collection



KSelfi 1



KSelfi Plus 1



Kme 1



Kme Plus 1



Kwe 2



Kwe Plus 2-4

*Can be extended to 4, 6 & 8

Our Signature Collection



The Ultimate Collaboration Hub



Kteam 4  4

*Can be extended to 6 & 8



Kteam 6  6

*Can be extended to 8



Kteam 8  8

Our Floorless Collection



Privacy made Accessible



KSelfi F 



KSelfi Plus F 



Kme F 



Kme Plus F 

*Can be extended to 4, 6 & 8



Kwe F 

*Can be extended to 4, 6 & 8



Kwe Plus F  2-4

Please note that the Floorless Collection requires floor drilling for proper installation.

Our Floorless Collection



Your Accessible Teamwork Zone



Kteam 4 F



*Can be extended to 6 & 8



Kteam 6 F



*Can be extended to 8



Kteam 8 F



Please note that the Floorless Collection requires floor drilling for proper installation.



Kteam 4:
Where Small Teams
Achieve Big Dreams.

KSelfi

A moment alone

SIGNATURE SIZE

Overall: W: 44" - D: 37" - H: 88"

Inside: W: 36" - D: 36" - H: 80"

ACOUSTICS

NIC rating of 36 dB certified
Noise cancellation technology

WEIGHT

800 lbs/362 kg



AIR EXCHANGE

100 complete air changes/hour

DATA CENTER

UL approved, 1 USB A port,
1 USB C port, 2 Simplex outlets
Motion detector (controls lights & fan)

FLOORLESS SIZE

Overall: W: 44" - D: 37" - H: 88"

Inside: W: 36" - D: 36" - H: 84"

EXTRA HEIGHT, EXTRA POSSIBILITIES

WEIGHT (Floorless)

750 lbs/340 kg

To learn more, check our technical sheet on our website



KSelfi Plus

Enhance Productivity

SIGNATURE SIZE

Overall: W: 56" - D: 48" - H: 88"

Inside: W: 48" - D: 47" - H: 80"

WEIGHT

1000 lbs/453 kg

ACOUSTICS

NIC rating of 36 dB certified
Noise cancellation technology



AIR EXCHANGE

100 complete air changes/hour

DATA CENTER

UL approved, 1 USB A port,
1 USB C port, 2 Simplex outlets
Motion detector (controls lights & fan)

FLOORLESS SIZE

Overall: W: 56" - D: 48" - H: 88"

Inside: W: 48" - D: 47" - H: 84"

EXTRA HEIGHT, EXTRA POSSIBILITIES

WEIGHT (Floorless)

950 lbs/431 kg



To learn more, check our technical sheet on our website

Kme

Where work gets done

SIGNATURE SIZE

Overall: W: 88" - D: 37" - H: 88"

Inside: W: 80" - D: 36" - H: 80"

ACOUSTICS

NIC rating of 36 dB certified
Noise cancellation technology

WEIGHT

1200 lbs/544 kg



AIR EXCHANGE

100 complete air changes/hour

FLOORLESS SIZE

Overall: W: 88" - D: 37" - H: 88"

Inside: W: 80" - D: 36" - H: 84"

**EXTRA HEIGHT,
EXTRA POSSIBILITIES**

WEIGHT (Floorless)

1100 lbs/500 kg



To learn more, check our technical sheet on our website

Kme Plus

Expansive Possibilities, Exclusive Privacy

SIGNATURE SIZE

Overall: W: 88" - D: 48" - H: 88"

Inside: W: 80" - D: 47" - H: 80"

ACOUSTICS

NIC rating of 36 dB certified
Noise cancellation technology

WEIGHT

1525 lbs/692 kg



AIR EXCHANGE

100 complete air changes/hour

FLOORLESS SIZE

Overall: W: 88" - D: 48" - H: 88"

Inside: W: 80" - D: 47" - H: 84"

**EXTRA HEIGHT,
EXTRA POSSIBILITIES**

WEIGHT (Floorless)

1150 lbs/527 kg



To learn more, check our technical sheet on our website

Kwe

Seal the Deal in Silence

SIGNATURE SIZE

Overall: W: 88" - D: 37" - H: 88"
Inside: W: 80" - D: 36" - H: 80"

ACOUSTICS

NIC rating of 36 dB certified
Noise cancellation technology

WEIGHT

1200 lbs/544 kg



AIR EXCHANGE

100 complete air changes/hour

FLOORLESS SIZE

Overall: W: 88" - D: 37" - H: 88"
Inside: W: 80" - D: 36" - H: 84"

*EXTRA HEIGHT,
EXTRA POSSIBILITIES*

WEIGHT (Floorless)

1100 lbs/500 kg



To learn more, check our technical sheet on our website



Kwe Plus :
More Depth,
More Possibilities, More Connection.

Kwe Plus

Space to Think, Room to Connect

SIGNATURE SIZE

Overall: W: 88" - D: 48" - H: 88"
Inside: W: 80" - D: 47" - H: 80"

ACOUSTICS

NIC rating of 36 dB certified
Noise cancellation technology

WEIGHT

1525 lbs/692 kg



AIR EXCHANGE

100 complete air changes/hour

FLOORLESS SIZE

Overall: W: 88" - D: 48" - H: 88"
Inside: W: 80" - D: 47" - H: 84"

*ROOMIER, ACCESSIBLE,
ELEVATED*

WEIGHT (Floorless)

1150 lbs/527 kg



To learn more, check our technical sheet on our website

Kteam 4

Think Big, Even in Small Teams

SIGNATURE SIZE

Overall: W: 88" - D: 73" - H: 88"
Inside: W: 80" - D: 72" - H: 80"

ACOUSTICS

NIC rating of 36 dB certified
Noise cancellation technology

WEIGHT

1800 lbs/816 kg



AIR EXCHANGE

100 complete air changes/hour

FLOORLESS SIZE

Overall: W: 88" - D: 73" - H: 88"
Inside: W: 80" - D: 72" - H: 84"

**ROOMIER, ACCESSIBLE,
ELEVATED**

WEIGHT (Floorless)

1600 lbs/726 kg



To learn more, check our technical sheet on our website

Kteam 6

From Brainstorms to Breakthroughs

SIGNATURE SIZE

Overall: W: 88" - D: 109" - H: 88"
Inside: W: 80" - D: 108" - H: 80"

ACOUSTICS

NIC rating of 36 dB certified
Noise cancellation technology

WEIGHT

2400 lbs/1089 kg



AIR EXCHANGE

100 complete air changes/hour

FLOORLESS SIZE

Overall: W: 88" - D: 109" - H: 88"
Inside: W: 80" - D: 108" - H: 84"

*ROOMIER, ACCESSIBLE,
ELEVATED*

WEIGHT (Floorless)

2100 lbs/953 kg

Kteam 8

The Ultimate Space for Team Creativity

SIGNATURE SIZE

Overall: W: 88" - D: 145" - H: 88"
Inside: W: 80" - D: 144" - H: 80"

ACOUSTICS

NIC rating of 36 dB certified
Noise cancellation technology

WEIGHT

3000 lbs/1361 kg



AIR EXCHANGE

100 complete air changes/hour

FLOORLESS SIZE

Overall: W: 88" - D: 145" - H: 88"
Inside: W: 80" - D: 144" - H: 84"

*ROOMIER, ACCESSIBLE,
ELEVATED*

WEIGHT (Floorless)

2600 lbs/1180 kg

To learn more, check our technical sheet on our website



KSelfi :
Private. Personal. Perfect.

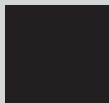
Customize Your Kubebooth



Exterior Finishes



White



Black

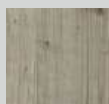
G1



R60 Fresco



K66 Whisper



K30 Spectra

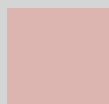


K60 Chiffon



K16 Esterel

G2



Pink Daisy



736 Ocean Blue

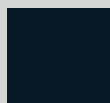


732 Vision Mink



3026 Rustic Red

G3*



P771 Blue Notte



P761 Fog



P725 Fume

*Laminate & aluminum colours may differ slightly.

Interior Finishes



EG-04 Silver Gray



EG-08 Moon Gray



EG-10 Deep Gray



EG-02 Water Gray



EG-20 Deep Blue



EG-23 Turquoise



EG-30 Dark Camel

Carpet Colours

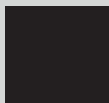


Light Gray



Dark Gray

Door Handles

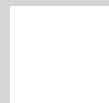


Black



Silver

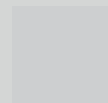
Aluminum Corners



White

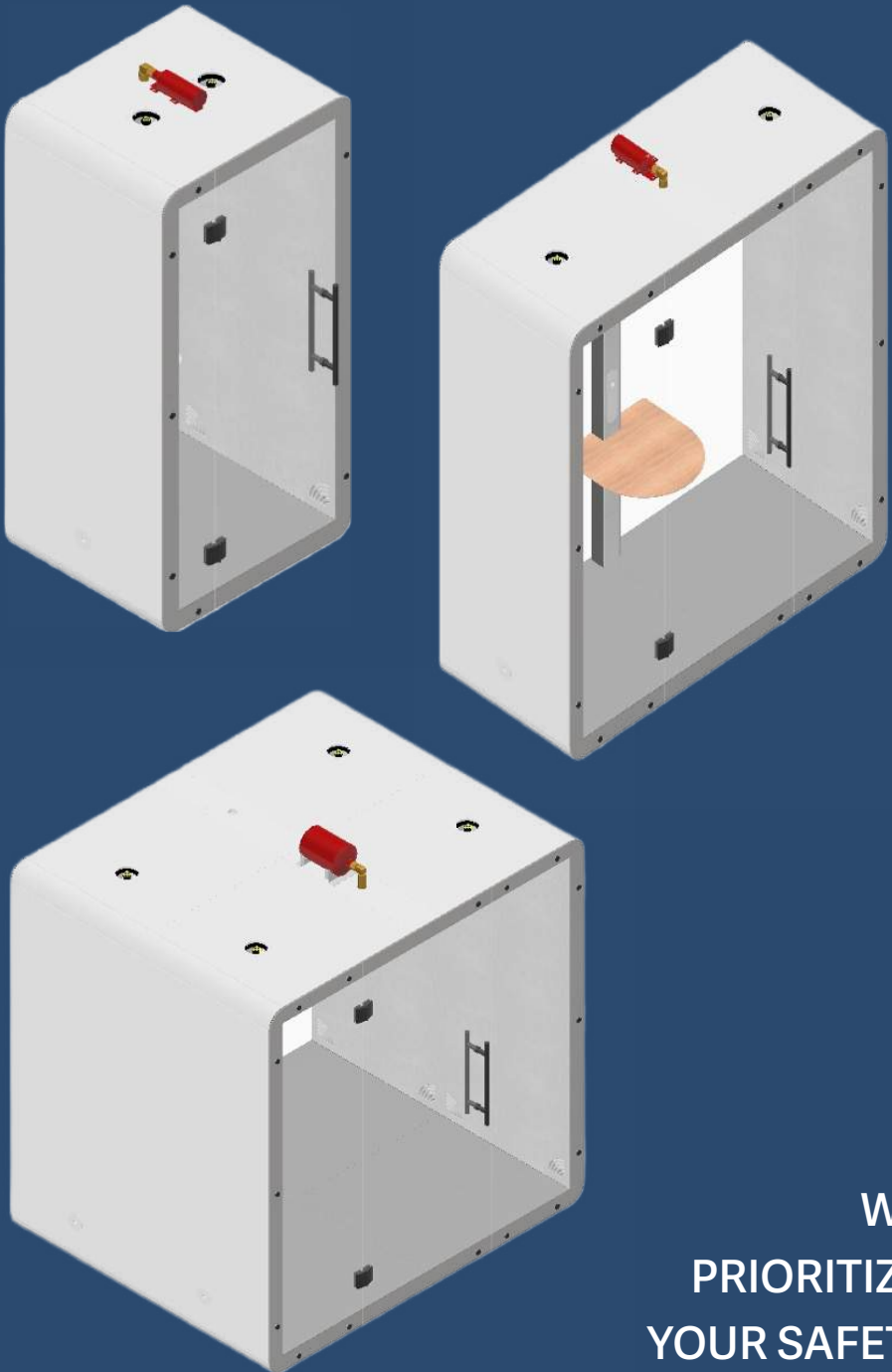


Black



Gray

External Fire Extinguisher Unit



**WE
PRIORITIZE
YOUR SAFETY**

In-house Manufacturing

CNC Machinery:

State-of-the-art CNC machinery to precisely cut and shape our products resulting in not only high-quality, consistent products but also minimizes material waste by using only what is necessary.



Recycled Metal:

By repurposing metal, we reduce the demand for new materials and help minimize waste.

GreenGuard Certified Materials:

Our products meet rigorous standards for indoor air quality and contribute to a healthier, more sustainable work environment.



Wood from Sustainable Forests:

We use wood that is responsibly harvested and replanted to ensure that forests remain healthy and productive.

Our Diverse Clientele

All-sized businesses in need of open-space solutions that are both functional and stylish.

- **Government (Federal, Provincial & Municipal)**
- **Corporate & Commercial**
- **Finance & Tech**
- **Education**
- **Healthcare**
- **Tourism**
- **Hospitality**



Our Recent Installations



Client: **Transport Canada**



Client: **Hertz**



Client: **University of Toronto**



Client: **University of Montreal**



Client: **Rakuten Kobo**



Client: **Citico**



KSelfi Plus :
Solo Space, Singular Focus.

CONTACT US

Headquarters

40 Penn Drive, Toronto
ON M9L 2A9

Email

info@kubechooth.com

Phone

+1 (647) 932-3997
+1 (855) 916-5997

Website

www.kubechooth.com

Social Media

