



Because privacy matters!



Kubebooth **Supply Arrangements with the** **Government of Canada**

SA E60PQ-140003D

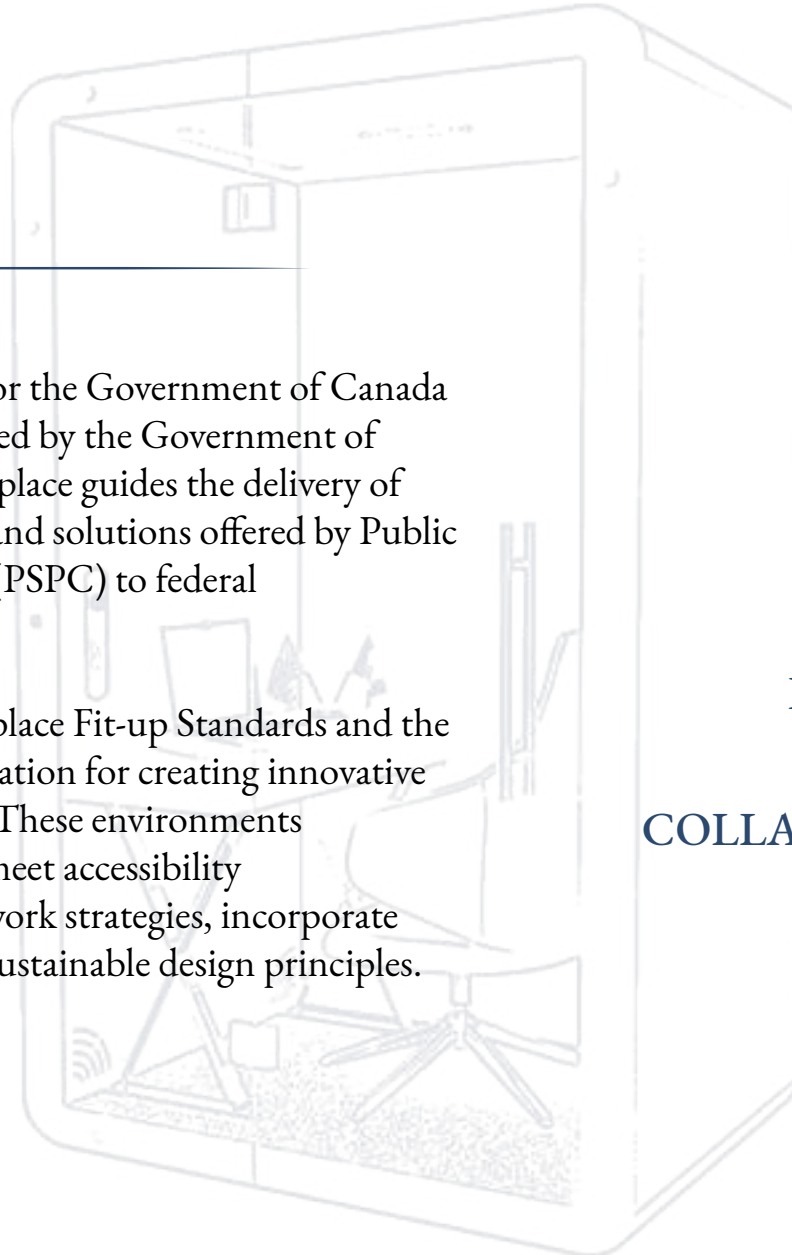
Office Furniture for Workspaces - Category 4



OVERVIEW

GCworkplace is the shared vision for the Government of Canada workplace, established and supported by the Government of Canada Fit-up Standards. GCworkplace guides the delivery of workplace modernization projects and solutions offered by Public Services and Procurement Canada (PSPC) to federal organizations.

The Government of Canada Workplace Fit-up Standards and the supporting tools provide the foundation for creating innovative activity-based work environments. These environments accommodate diverse work styles, meet accessibility requirements, support alternative work strategies, incorporate modern technology, and integrate sustainable design principles.



GCworkplace Dimensions

FLEXIBLE



01

HEALTHY



02

EFFICIENT



03

INCLUSIVE



04

COLLABORATIVE



05

DIGITAL



06

GREEN



07

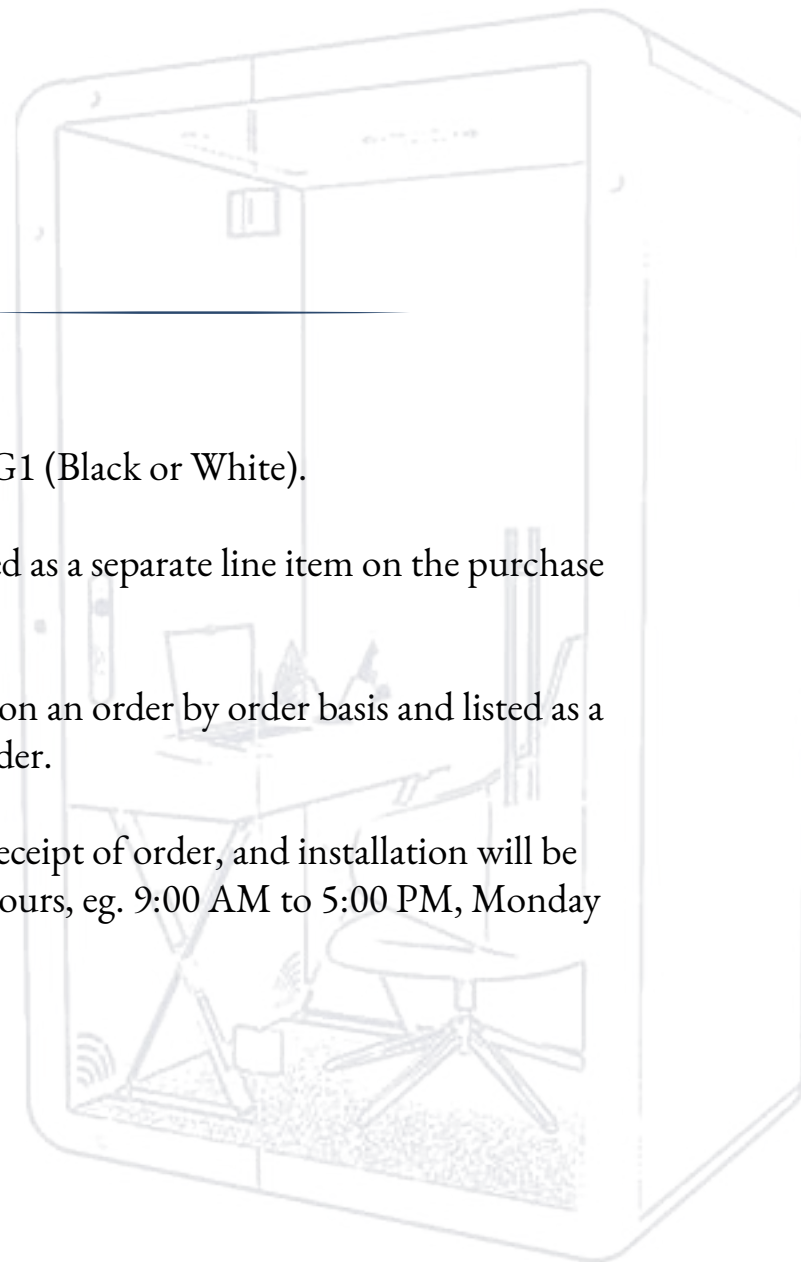
PRODUCT INFO & ORDERING ITEMS

The exterior finish of all products is G1 (Black or White).

Freight delivery charges are to be listed as a separate line item on the purchase order.

Installation charges are to be quoted on an order by order basis and listed as a separate line item on the purchase order.

Delivery is stated as 3 -5 weeks after receipt of order, and installation will be carried out during normal working hours, eg. 9:00 AM to 5:00 PM, Monday through Friday.



**CALL UPS AGAINST THIS
SUPPLY ARRANGEMENT
MUST BE ISSUED TO**

KUBEBOOTH INC.

40 Penn Dr. , Toronto
Ontario M9L 2A9
www.kubebooth.com
info@kubebooth.com

AUTHORIZED KUBEBOOTH DEALERS



ATLANTIC REGION

Atlantic Business Interiors

Nova Scotia

30 Troop Avenue
Dartmouth, Nova Scotia
B3B 1Z1
Phone: (902) 468-3200
Fax: (902) 468-5051

New Brunswick – Moncton

Phone: (506) 866-6738

New Brunswick – Saint John

28 McIlveen Drive, Unit 12
Saint John, New Brunswick
E2J 4Y7
Phone: (506) 672-0750
Fax: (506) 674-1435

Newfoundland and Labrador

21 Mews Place
St. John's, Newfoundland
A1B 4N2
Phone: (709) 576-6405
Fax: (709) 576-6418

Atlantic Business Interiors

Prince Edward Island

25 Fourth Street, Suite 400
Charlottetown,
Prince Edward Island
C1E 2B4
Phone: (902) 566-9700
Fax: (902) 566-4978

ONTARIO REGION

Contemporary Office Interiors

GTA Distribution Center

Phone 416-364-5111
Address 6225 Danville Road Mississauga,
ON L5T2H7

Toronto

Phone 416-364-5111
Address 56 Temperance St, 2nd Floor
Toronto, ON M5H 3V5

The Business Line Inc.

GTA

30 Troop Avenue
Dartmouth, Nova Scotia
B3B 1Z1
Phone: (905) 785-8120

NATIONAL CAPITAL REGION

Brezach Solutions Inc.

5380 Canotek Rd, Unit 11
Ottawa, ON, K1J 1H7
Phone: 613-742-0051
Email: info@brezach.com

Capital Office Interiors

16 Antares Drive
Ottawa, Ontario
K2E 7Y7
Phone: (613) 723-2000



SIGNATURE COLLECTION



Ki Signature Booth

The Ki Signature Booth by Kubebooth is a premium soundproof solution designed for one person, perfect for virtual meetings, quick calls, and ad hoc discussions.



STANDARD FEATURES

- 36 dB Certified noise reduction
- 100 air exchanges/hour
- Mobile with casters
- Energy efficient
- Worktop included W: 20" x L: 12"
- BIFMA Level 2 approved
- ISO 14001, ISO 9001, MAS, UL/ULC certified
- Pre-engineered knockout hole for sprinklers
- Plug n Play

OCCUPANTS: 1
VISUAL PRIVACY: Low-Medium
ACOUSTIC PRIVACY: High

TECHNICAL INFO

Dimensions:

Overall- W: 44" - D: 37" - H: 88"

Inside- W: 36" - D: 36" - H: 80"

Door - H: 88" x W: 32"

Rear Panel - H: 88" x W: 44"

Front Side Panel - H: 88" x W: 12"

Weight: 800 lbs/362 kg

Data Center: UL approved, 1 USB A port,
1 USB C port, 2 Simplex outlets
Motion detector (controls lights & fan)

10mm clear tempered glass
Ceramic painted borders
12V LED light bar magnet, 3500k, 12VDC
Galvanized steel frames
10ft cord 120v/15Amp
D pull handle

RANGE OF FINISHES

EXTERIOR



White



Black

CARPET



Light Gray



Dark Gray

DOOR HANDLE



Black



Silver

INTERIOR



EG-04 Silver Gray



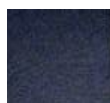
EG-08 Moon Gray



EG-10 Deep Gray



EG-02 Water Gray



EG-20 Deep Blue



EG-23 Turquoise



EG-30 Dark Camel

ALUMINUM CORNERS



White



Black



Gray

ADD ONs

Seismic bracing
 One-touch LCD control panel
 LCD TV mount bracing
 White glass board
 Personalized company branding
 External fire extinguisher unit

Ethernet ports
 Bluetooth speakers
 Frosted film glass
 Occupancy lights



SIGNATURE COLLECTION



Ki+ Signature Booth

The Ki+ by Kubebooth is a single-person soundproof office pod designed to enhance productivity and well-being in the workplace. This compact booth provides a private enclave for focused tasks, quick rejuvenation, or uninterrupted learning.



STANDARD FEATURES

- 36 dB Certified noise reduction
- 100 air exchanges/hour
- Mobile with casters
- Energy efficient
- BIFMA Level 2 approved
- ISO 14001, ISO 9001, MAS, UL/ULC certified
- Pre-engineered knockout hole for sprinklers
- Plug n Play

OCCUPANTS: 1
VISUAL PRIVACY: Low-Medium
ACOUSTIC PRIVACY: High

TECHNICAL INFO

Dimensions:

Overall- W: 60" - D: 37" - H: 88"

Inside- W: 50" - D: 36" - H: 80"

Door - H: 88" x W: 32"

Front Side Panel - H: 88" x W: 12"

Weight: 950 lbs/431 kg

Data Center: UL approved, 1 USB A port,
1 USB C port, 2 Simplex outlets
Motion detector (controls lights & fan)

10mm clear tempered glass
Ceramic painted borders
12V LED light bar magnet, 3500k, 12VDC
Galvanized steel frames
10ft cord 120v/15Amp
D pull handle

RANGE OF FINISHES

EXTERIOR



White



Black

CARPET



Light Gray



Dark Gray

DOOR HANDLE



Black



Silver

INTERIOR



EG-04 Silver Gray



EG-08 Moon Gray



EG-10 Deep Gray



EG-02 Water Gray



EG-20 Deep Blue



EG-23 Turquoise



EG-30 Dark Camel

ALUMINUM CORNERS



White



Black



Gray

ADD ONs

Seismic bracing
 One-touch LCD control panel
 LCD TV mount bracing
 White glass board
 Personalized company branding
 External fire extinguisher unit

Ethernet ports
 Bluetooth speakers
 Frosted film glass
 Occupancy lights



SIGNATURE COLLECTION



Kme Signature Booth

Compact and sleek, the Kme Signature Booth is a one-person office designed for private, focused work. With superior soundproofing, it's ideal for confidential conversations or deep concentration, making it perfect for any modern workspace.



STANDARD FEATURES

- 36 dB Certified noise reduction
- 100 air exchanges/hour
- Mobile with casters
- Energy efficient
- BIFMA Level 2 approved
- ISO 14001, ISO 9001, MAS, UL/ULC certified
- Pre-engineered knockout hole for sprinklers
- Plug n Play

OCCUPANTS: 1
VISUAL PRIVACY: Low-Medium
ACOUSTIC PRIVACY: High

TECHNICAL INFO

Dimensions:

- Overall- W: 88" - D: 37" - H: 88"
- Inside- W: 80" - D: 36" - H: 80"
- Door - H: 88" x W: 32"
- Front Side Panels - H: 88" x W: 28"
- Rear Panel - H: 88" x W: 44"

Weight: 1200 lbs/544 kg

Data Center: UL approved, 1 USB A port,
1 USB C port, 2 Simplex outlets
Motion detector (controls lights & fan)

- 10mm clear tempered glass
- Ceramic painted borders
- 12V LED light bar magnet, 3500k, 12VDC
- Galvanized steel frames
- 10ft cord 120v/15Amp

RANGE OF FINISHES

EXTERIOR



White



Black

CARPET



Light Gray



Dark Gray

DOOR HANDLE



Black



Silver

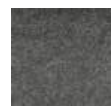
INTERIOR



EG-04 Silver Gray



EG-08 Moon Gray



EG-10 Deep Gray



EG-02 Water Gray



EG-20 Deep Blue



EG-23 Turquoise



EG-30 Dark Camel

ALUMINUM CORNERS



White



Black



Gray

ADD ONs

Seismic bracing

One-touch LCD control panel

LCD TV mount bracing

White glass board

Personalized company branding

External fire extinguisher unit

Ethernet ports

Bluetooth speakers

Frosted film glass

Occupancy lights



SIGNATURE COLLECTION



Kwe Signature Booth

Designed for flexibility, the Kwe Signature Booth comfortably accommodates 2 people and is extendable to fit 4, 6, or even 8. It offers a spacious, sound-insulated environment for productive meetings or focused collaboration, adaptable to your evolving office needs.



STANDARD FEATURES

- 36 dB Certified noise reduction
- 100 air exchanges/hour
- Mobile with casters
- Extendable for 4, 6 and 8 people
- Energy efficient
- BIFMA Level 2 approved
- ISO 14001, ISO 9001, MAS, UL/ULC certified
- Pre-engineered knockout hole for sprinklers
- Plug n Play

OCCUPANTS: 2
VISUAL PRIVACY: Low-Medium
ACOUSTIC PRIVACY: High

TECHNICAL INFO

Dimensions:

- Overall- W: 88" - D: 37" - H: 88"
- Inside- W: 80" - D: 36" - H: 80"
- Door - H: 88" x W: 32"
- Front Side Panels - H: 88" x W: 28"
- Rear Panel - H: 88" x W: 44"

Weight: 1200 lbs/544 kg

Data Center: UL approved, 1 USB A port,
1 USB C port, 2 Simplex outlets
Motion detector (controls lights & fan)

- 10mm clear tempered glass
- Ceramic painted borders
- 12V LED light bar magnet, 3500k, 12VDC
- Galvanized steel frames
- 10ft cord 120v/15Amp

RANGE OF FINISHES

EXTERIOR



White



Black

CARPET



Light Gray



Dark Gray

DOOR HANDLE



Black



Silver

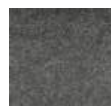
INTERIOR



EG-04 Silver Gray



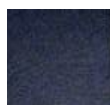
EG-08 Moon Gray



EG-10 Deep Gray



EG-02 Water Gray



EG-20 Deep Blue



EG-23 Turquoise



EG-30 Dark Camel

ALUMINUM CORNERS



White



Black



Gray

ADD ONs

Seismic bracing

One-touch LCD control panel

LCD TV mount bracing

White glass board

Personalized company branding

External fire extinguisher unit

Ethernet ports

Bluetooth speakers

Frosted film glass

Occupancy lights



SIGNATURE COLLECTION



Kwe Plus Signature Booth

The Kwe Plus Signature Booth is perfect for groups of 2-4 people, offering a spacious yet private area for meetings, brainstorming sessions, or team collaboration. Its soundproof design ensures quiet and comfort, making it a stylish and practical addition to any workspace.



STANDARD FEATURES

- 36 dB Certified noise reduction
- 100 air exchanges/hour
- Mobile with casters
- Extendable for 6 and 8 people
- Energy efficient
- BIFMA Level 2 approved
- ISO 14001, ISO 9001, MAS, UL/ULC certified
- Pre-engineered knockout hole for sprinklers
- Plug n Play

OCCUPANTS: 2-4
VISUAL PRIVACY: Low-Medium
ACOUSTIC PRIVACY: High

TECHNICAL INFO

Dimensions:

- Overall- W: 88" - D: 48" - H: 88"
- Inside- W: 80" - D: 47" - H: 80"
- Door - H: 88" x W: 32"
- Front Side Panels - H: 88" x W: 28"
- Rear Panel - H: 88" x W: 44"

Weight: 1525 lbs/692 kg

Data Center: UL approved, 1 USB A port,
1 USB C port, 2 Simplex outlets
Motion detector (controls lights & fan)

- 10mm clear tempered glass
- Ceramic painted borders
- 12V LED light bar magnet, 3500k, 12VDC
- Galvanized steel frames
- 10ft cord 120v/15Amp

RANGE OF FINISHES

EXTERIOR



White



Black

CARPET



Light Gray



Dark Gray

DOOR HANDLE



Black



Silver

INTERIOR



EG-04 Silver Gray



EG-08 Moon Gray



EG-10 Deep Gray



EG-02 Water Gray



EG-20 Deep Blue



EG-23 Turquoise



EG-30 Dark Camel

ALUMINUM CORNERS



White



Black



Gray

ADD ONs

Seismic bracing
 One-touch LCD control panel
 LCD TV mount bracing
 White glass board
 Personalized company branding
 External fire extinguisher unit

Ethernet ports
 Bluetooth speakers
 Frosted film glass
 Occupancy lights



SIGNATURE COLLECTION



Kteam 4 Signature Booth

The Kteam by KubeBooth is a spacious, extendable office pod designed for collaboration, providing superior sound insulation and air quality control for productive team interactions.



STANDARD FEATURES

- 36 dB Certified noise reduction
- 100 air exchanges/hour
- Mobile with casters
- Extendable for 6 and 8 people
- Energy efficient
- BIFMA Level 2 approved
- ISO 14001, ISO 9001, MAS, UL/ULC certified
- Pre-engineered knockout hole for sprinklers
- Plug n Play

OCCUPANTS: 4
VISUAL PRIVACY: Low-Medium
ACOUSTIC PRIVACY: High

TECHNICAL INFO

Dimensions:

- Overall- W: 88" - D: 73" - H: 88"
- Inside- W: 80" - D: 72" - H: 80"
- Door - H: 88" x W: 32"
- Front Side Panels - H: 88" x W: 28"
- Rear Panel - H: 88" x W: 44"

Weight: 1800 lbs/816 kg

Data Center: UL approved, 1 USB A port, 1 USB C port, 2 Simplex outlets
Motion detector (controls lights & fan)

- 10mm clear tempered glass
- Ceramic painted borders
- 12V LED light bar magnet, 3500k, 12VDC
- Galvanized steel frames
- 10ft cord 120v/15Amp

RANGE OF FINISHES

EXTERIOR



White



Black

CARPET



Light Gray



Dark Gray

DOOR HANDLE



Black



Silver

INTERIOR



EG-04 Silver Gray



EG-08 Moon Gray



EG-10 Deep Gray



EG-02 Water Gray



EG-20 Deep Blue



EG-23 Turquoise



EG-30 Dark Camel

ALUMINUM CORNERS



White



Black



Gray

ADD ONs

Seismic bracing

One-touch LCD control panel

LCD TV mount bracing

White glass board

Personalized company branding

External fire extinguisher unit

Ethernet ports

Bluetooth speakers

Frosted film glass

Occupancy lights



SIGNATURE COLLECTION



Kteam 6 Signature Booth

Experience enhanced collaboration in the Kteam 6, a soundproof meeting pod designed for six, featuring easy plug-and-play installation and customizable finishes to match your office decor.



STANDARD FEATURES

- 36 dB Certified noise reduction
- 100 air exchanges/hour
- Mobile with casters
- Extendable for 8 people
- Energy efficient
- BIFMA Level 2 approved
- ISO 14001, ISO 9001, MAS,
- UL/ULC certified
- Pre-engineered knockout hole for sprinklers
- Plug n Play

OCCUPANTS: 6
VISUAL PRIVACY: Low-Medium
ACOUSTIC PRIVACY: High

TECHNICAL INFO

Dimensions:

Overall- W: 88" - D: 109" - H: 88"

Inside- W: 80" - D: 108" - H: 80"

Door - H: 88" x W: 32"

Front Side Panels - H: 88" x W: 28"

Rear Panel - H:88" x W: 44"

Weight: 2400 lbs/1089 kg

Data Center: UL approved, 1 USB A port,
1 USB C port, 2 Simplex outlets
Motion detector (controls lights & fan)

10mm clear tempered glass
Ceramic painted borders
12V LED light bar magnet, 3500k, 12VDC
Galvanized steel frames
10ft cord 120v/15Amp

RANGE OF FINISHES

EXTERIOR



White



Black

CARPET



Light Gray



Dark Gray

DOOR HANDLE



Black



Silver

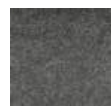
INTERIOR



EG-04 Silver Gray



EG-08 Moon Gray



EG-10 Deep Gray



EG-02 Water Gray



EG-20 Deep Blue



EG-23 Turquoise



EG-30 Dark Camel

ALUMINUM CORNERS



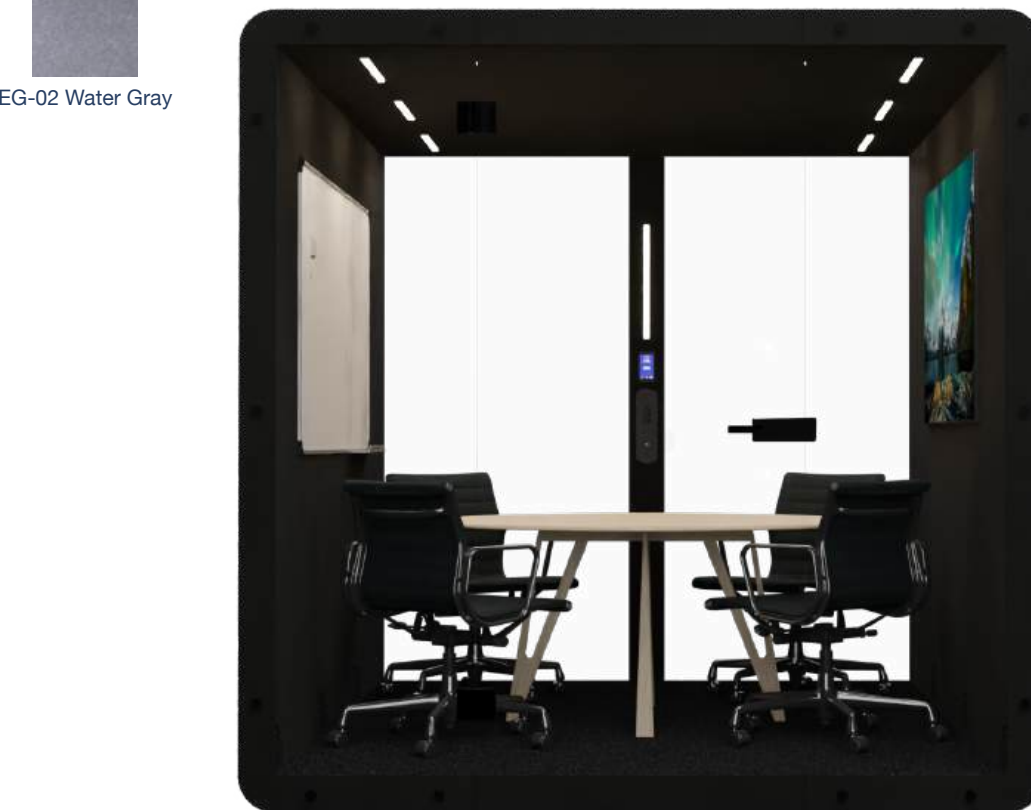
White



Black



Gray



ADD ONs

Seismic bracing

One-touch LCD control panel

LCD TV mount bracing

White glass board

Personalized company branding

External fire extinguisher unit

Ethernet ports

Bluetooth speakers

Frosted film glass

Occupancy lights

SIGNATURE COLLECTION



Kteam 8 Signature Booth

The Kteam 8 signature booth by Kubebooth is an expandable meeting pod designed for up to 8 users, perfect for collaborative discussions, conferences, and brainstorming sessions.



STANDARD FEATURES

- 36 dB Certified noise reduction
- 100 air exchanges/hour
- Mobile with casters
- Energy efficient
- BIFMA Level 2 approved
- ISO 14001, ISO 9001, MAS,
- UL/ULC certified
- Pre-engineered knockout hole for sprinklers
- Plug n Play

OCCUPANTS: 8
VISUAL PRIVACY: Low-Medium
ACOUSTIC PRIVACY: High

TECHNICAL INFO

Dimensions:

Overall- W: 88" - D: 145" - H: 88"

Inside- W: 80" - D: 144" - H: 80"

Door - H: 88" x W: 32"

Front Side Panels - H: 88" x W: 28"

Rear Panel - H: 88" x W: 44"

Weight: 3000 lbs/1361 kg

Data Center: UL approved, 1 USB A port,
1 USB C port, 2 Simplex outlets

Motion detector (controls lights & fan)

10mm clear tempered glass

Ceramic painted borders

12V LED light bar magnet, 3500k, 12VDC

Galvanized steel frames

10ft cord 120v/15Amp

RANGE OF FINISHES

EXTERIOR



White



Black

INTERIOR



EG-04 Silver Gray



EG-08 Moon Gray



EG-10 Deep Gray



EG-02 Water Gray

CARPET



Light Gray



Dark Gray



EG-20 Deep Blue



EG-23 Turquoise



EG-30 Dark Camel

ALUMINUM CORNERS



White



Black



Gray

DOOR HANDLE



Black



Silver

ADD ONs

Seismic bracing

One-touch LCD control panel

LCD TV mount bracing

White glass board

Personalized company branding

External fire extinguisher unit

Ethernet ports

Bluetooth speakers

Frosted film glass

Occupancy lights





ACCESSORIES



- TOUCHPAD WITH FACELIGHT CONTROL PANEL

- OCCUPANCY LIGHTS

- SEISMIC BRACING

- LCD TV MOUNT BRACKET

- WHITE GLASS BOARD

- ETHERNET PORTS

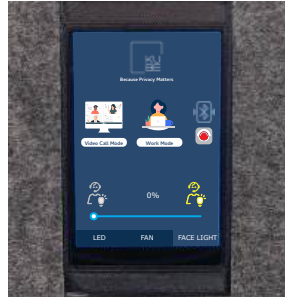
- PERSONALIZED COMPANY BRANDING

- BLUETOOTH SPEAKERS

- FROSTED FILM GLASS

- EXTERNAL FIRE EXTINGUISHER UNIT

- SMART DOOR LOCK*
(Only available on select units)



Touchpad



Occupancy Lights



LCD TV Mount Bracket



Smart Lock



Whiteboard



Bluetooth Speaker

FLOORLESS COLLECTION



Ki Floorless Booth

The Ki Floorless Booth offers a sleek, soundproof workspace with step-free entry, ensuring accessibility for all users while providing privacy and productivity in any office setting.



STANDARD FEATURES

- Class A noise reduction
- 100 air exchanges/hour
- Energy efficient
- Worktop included W: 20" x L: 12"
- BIFMA Level 2 approved
- ISO 14001, ISO 9001, MAS, UL/ULC certified
- Pre-engineered knockout hole for sprinklers
- Plug n Play

OCCUPANTS: 1
VISUAL PRIVACY: Low-Medium
ACOUSTIC PRIVACY: Medium-High

TECHNICAL INFO

Dimensions:

Overall- W: 44" - D: 37" - H: 88"

Inside- W: 36" - D: 36" - H: 84"

Door - H: 88" x W: 32"

Rear Panel - H: 88" x W: 44"

Front Side Panel - H: 88" x W: 12"

Weight: 750 lbs/340 kg

Data Center: UL approved, 1 USB A port,
1 USB C port, 2 Simplex outlets
Motion detector (controls lights & fan)

10mm clear tempered glass
Ceramic painted borders
12V LED light bar magnet, 3500k, 12VDC
Galvanized steel frames
10ft cord 120v/15Amp

RANGE OF FINISHES

EXTERIOR



White



Black

CARPET



Light Gray



Dark Gray

DOOR HANDLE



Black



Silver

INTERIOR



EG-04 Silver Gray



EG-08 Moon Gray



EG-10 Deep Gray



EG-02 Water Gray



EG-20 Deep Blue



EG-23 Turquoise



EG-30 Dark Camel

ALUMINUM CORNERS



White



Black



Gray

ADD ONs

Seismic bracing
 One-touch LCD control panel
 LCD TV mount bracing
 White glass board
 Personalized company branding
 External fire extinguisher unit

Ethernet ports
 Bluetooth speakers
 Frosted film glass
 Occupancy lights



FLOORLESS COLLECTION



Ki+ Floorless Booth

The Ki+ Floorless Booth offers a spacious, soundproof environment for virtual meetings and focused work, designed for accessibility and comfort while seamlessly integrating into any office aesthetic.



STANDARD FEATURES

- Class A noise reduction
- 100 air exchanges/hour
- Energy efficient
- BIFMA Level 2 approved
- ISO 14001, ISO 9001, MAS, UL/ULC certified
- Pre-engineered knockout hole for sprinklers
- Plug n Play

OCCUPANTS: 1
VISUAL PRIVACY: Low-Medium
ACOUSTIC PRIVACY: Medium-High

TECHNICAL INFO

Dimensions:

Overall- W: 60" - D: 37" - H: 88"

Inside- W: 50" - D: 36" - H: 84"

Door - H: 88" x W: 32"

Rear Panel - H: 88" x W: 44"

Front Side Panel - H: 88" x W: 12"

Weight: 900 lbs/408 kg

Data Center: UL approved, 1 USB A port,
1 USB C port, 2 Simplex outlets
Motion detector (controls lights & fan)

10mm clear tempered glass
Ceramic painted borders
12V LED light bar magnet, 3500k, 12VDC
Galvanized steel frames
10ft cord 120v/15Amp

RANGE OF FINISHES

EXTERIOR



White



Black

CARPET



Light Gray



Dark Gray

DOOR HANDLE



Black



Silver

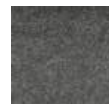
INTERIOR



EG-04 Silver Gray



EG-08 Moon Gray



EG-10 Deep Gray



EG-02 Water Gray



EG-20 Deep Blue



EG-23 Turquoise



EG-30 Dark Camel

ALUMINUM CORNERS



White



Black



Gray

ADD ONs

Seismic bracing
 One-touch LCD control panel
 LCD TV mount bracing
 White glass board
 Personalized company branding
 External fire extinguisher unit

Ethernet ports
 Bluetooth speakers
 Frosted film glass
 Occupancy lights



FLOORLESS COLLECTION



Kme Floorless Booth

The Kme Floorless Booth is a premium single-user pod designed for inclusivity and productivity, featuring advanced noise reduction technology that ensures a serene workspace free from distractions.



STANDARD FEATURES

- Class A noise reduction
- 100 air exchanges/hour
- Energy efficient
- BIFMA Level 2 approved
- ISO 14001, ISO 9001, MAS, UL/ULC certified
- Pre-engineered knockout hole for sprinklers
- Plug n Play

OCCUPANTS: 1
VISUAL PRIVACY: Low-Medium
ACOUSTIC PRIVACY: Medium-High

TECHNICAL INFO

Dimensions:

- Overall- W: 88" - D: 37" - H: 88"
- Inside- W: 80" - D: 36" - H: 84"
- Door - H: 88" x W: 32"
- Rear Panel - H: 88" x W: 44"
- Front Side Panels - H: 88" x W: 28"

Weight: 1100 lbs/500 kg

Data Center: UL approved, 1 USB A port,
1 USB C port, 2 Simplex outlets
Motion detector (controls lights & fan)

- 10mm clear tempered glass
- Ceramic painted borders
- 12V LED light bar magnet, 3500k, 12VDC
- Galvanized steel frames
- 10ft cord 120v/15Amp

RANGE OF FINISHES

EXTERIOR



White



Black

CARPET



Light Gray



Dark Gray

DOOR HANDLE



Black



Silver

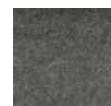
INTERIOR



EG-04 Silver Gray



EG-08 Moon Gray



EG-10 Deep Gray



EG-02 Water Gray



EG-20 Deep Blue



EG-23 Turquoise



EG-30 Dark Camel

ALUMINUM CORNERS



White



Black



Gray

ADD ONs

Seismic bracing
 One-touch LCD control panel
 LCD TV mount bracing
 White glass board
 Personalized company branding
 External fire extinguisher unit

Ethernet ports
 Bluetooth speakers
 Frosted film glass
 Occupancy lights



FLOORLESS COLLECTION



Kwe Floorless Booth

Experience exceptional teamwork in the Kwe Floorless Booth, designed for two users, for seamless collaboration in a spacious, soundproof pod.



STANDARD FEATURES

- Class A noise reduction
- 100 air exchanges/hour
- Extendable for 4, 6 and 8 people
- Energy efficient
- BIFMA Level 2 approved
- ISO 14001, ISO 9001, MAS, UL/ULC certified
- Pre-engineered knockout hole for sprinklers
- Plug n Play

OCCUPANTS: 2

VISUAL PRIVACY: Low-Medium

ACOUSTIC PRIVACY: Medium-High

TECHNICAL INFO

Dimensions:

Overall- W: 88" - D: 37" - H: 88"

Inside- W: 80" - D: 36" - H: 84"

Door - H: 88" x W: 32"

Rear Panel - H: 88" x W: 44"

Front Side Panels - H: 88" x W: 28"

Weight: 1100 lbs/500 kg

Data Center: UL approved, 1 USB A port,
1 USB C port, 2 Simplex outlets

Motion detector (controls lights & fan)

10mm clear tempered glass

Ceramic painted borders

12V LED light bar magnet, 3500k, 12VDC

Galvanized steel frames

10ft cord 120v/15Amp

RANGE OF FINISHES

EXTERIOR



White



Black

CARPET



Light Gray



Dark Gray

DOOR HANDLE



Black



Silver

INTERIOR



EG-04 Silver Gray



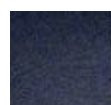
EG-08 Moon Gray



EG-10 Deep Gray



EG-02 Water Gray



EG-20 Deep Blue



EG-23 Turquoise



EG-30 Dark Camel

ALUMINUM CORNERS



White



Black



Gray

ADD ONs

Seismic bracing

One-touch LCD control panel

LCD TV mount bracing

White glass board

Personalized company branding

External fire extinguisher unit

Ethernet ports

Bluetooth speakers

Frosted film glass

Occupancy lights



FLOORLESS COLLECTION



Kwe Plus Floorless Booth

Enhance teamwork with the Kwe Plus Floorless Booth, designed for 2-4 users, offering customizable finishes, advanced connectivity options, and a serene environment for productive discussions.



STANDARD FEATURES

- Class A noise reduction
- 100 air exchanges/hour
- Extendable for 6 and 8 people
- Energy efficient
- BIFMA Level 2 approved
- ISO 14001, ISO 9001, MAS, UL/ULC certified
- Pre-engineered knockout hole for sprinklers
- Plug n Play

OCCUPANTS: 2-4
VISUAL PRIVACY: Low-Medium
ACOUSTIC PRIVACY: Medium-High

TECHNICAL INFO

Dimensions:

- Overall- W: 88" - D: 48" - H: 88"
- Inside- W: 80" - D: 47" - H: 84"
- Door - H: 88" x W: 32"
- Rear Panel - H: 88" x W: 44"
- Front Side Panels - H: 88" x W: 28"

Weight: 1150 lbs/527 kg

Data Center: UL approved, 1 USB A port,
1 USB C port, 2 Simplex outlets
Motion detector (controls lights & fan)

- 10mm clear tempered glass
- Ceramic painted borders
- 12V LED light bar magnet, 3500k, 12VDC
- Galvanized steel frames
- 10ft cord 120v/15Amp

RANGE OF FINISHES

EXTERIOR



White



Black

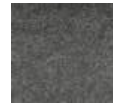
INTERIOR



EG-04 Silver Gray



EG-08 Moon Gray



EG-10 Deep Gray



EG-02 Water Gray

CARPET



Light Gray



Dark Gray



EG-20 Deep Blue



EG-23 Turquoise



EG-30 Dark Camel

ALUMINUM CORNERS



White



Black



Gray

DOOR HANDLE



Black



Silver

ADD ONs

Seismic bracing

One-touch LCD control panel

LCD TV mount bracing

White glass board

Personalized company branding

External fire extinguisher unit

Ethernet ports

Bluetooth speakers

Frosted film glass

Occupancy lights



FLOORLESS COLLECTION



Kteam 4 Floorless Booth

The Kteam 4 Floorless Booth provides an inviting workspace for 4 people, combining superior sound insulation with energy-efficient lighting and customizable finishes options to fit any office aesthetic.



STANDARD FEATURES

- Class A noise reduction
- 100 air exchanges/hour
- Extendable for 6 and 8 people
- Energy efficient
- BIFMA Level 2 approved
- ISO 14001, ISO 9001, MAS, UL/ULC certified
- Pre-engineered knockout hole for sprinklers
- Plug n Play

OCCUPANTS: 4
VISUAL PRIVACY: Low-Medium
ACOUSTIC PRIVACY: Medium-High

TECHNICAL INFO

Dimensions:

- Overall- W: 88" - D: 73" - H: 88"
- Inside- W: 80" - D: 72" - H: 84"
- Door - H: 88" x W: 32"
- Rear Panel - H: 88" x W: 44"
- Front Side Panels - H: 88" x W: 28"

Weight: 1600 lbs/726 kg

Data Center: UL approved, 1 USB A port,
1 USB C port, 2 Simplex outlets
Motion detector (controls lights & fan)

- 10mm clear tempered glass
- Ceramic painted borders
- 12V LED light bar magnet, 3500k, 12VDC
- Galvanized steel frames
- 10ft cord 120v/15Amp

RANGE OF FINISHES

EXTERIOR



White



Black

CARPET



Light Gray



Dark Gray

DOOR HANDLE



Black



Silver

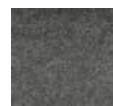
INTERIOR



EG-04 Silver Gray



EG-08 Moon Gray



EG-10 Deep Gray



EG-02 Water Gray



EG-20 Deep Blue



EG-23 Turquoise



EG-30 Dark Camel

ALUMINUM CORNERS



White



Black



Gray

ADD ONs

Seismic bracing

One-touch LCD control panel

LCD TV mount bracing

White glass board

Personalized company branding

External fire extinguisher unit

Ethernet ports

Bluetooth speakers

Frosted film glass

Occupancy lights



FLOORLESS COLLECTION



Kteam 6 Floorless Booth

Enhance productivity with the Kteam 6 Floorless Booth, a modern, soundproof pod for six that combines functionality with stylish design and easy plug-and-play setup.



STANDARD FEATURES

- Class A noise reduction
- 100 air exchanges/hour
- Extendable for 8 people
- Energy efficient
- BIFMA Level 2 approved
- ISO 14001, ISO 9001, MAS, UL/ULC certified
- Pre-engineered knockout hole for sprinklers
- Plug n Play

OCCUPANTS: 6
VISUAL PRIVACY: Low-Medium
ACOUSTIC PRIVACY: Medium-High

TECHNICAL INFO

Dimensions:

- Overall- W: 88" - D: 109" - H: 88"
- Inside- W: 80" - D: 108" - H: 84"
- Door - H: 88" x W: 32"
- Rear Panel - H: 88" x W: 44"
- Front Side Panels - H: 88" x W: 28"

Weight: 2100 lbs/953 kg

Data Center: UL approved, 1 USB A port,
1 USB C port, 2 Simplex outlets
Motion detector (controls lights & fan)

- 10mm clear tempered glass
- Ceramic painted borders
- 12V LED light bar magnet, 3500k, 12VDC
- Galvanized steel frames
- 10ft cord 120v/15Amp

RANGE OF FINISHES

EXTERIOR



White



Black

INTERIOR



EG-04 Silver Gray



EG-08 Moon Gray



EG-10 Deep Gray



EG-02 Water Gray

CARPET



Light Gray



Dark Gray



EG-20 Deep Blue



EG-23 Turquoise



EG-30 Dark Camel

ALUMINUM CORNERS



White



Black



Gray

DOOR HANDLE



Black



Silver

ADD ONs

Seismic bracing

One-touch LCD control panel

LCD TV mount bracing

White glass board

Personalized company branding

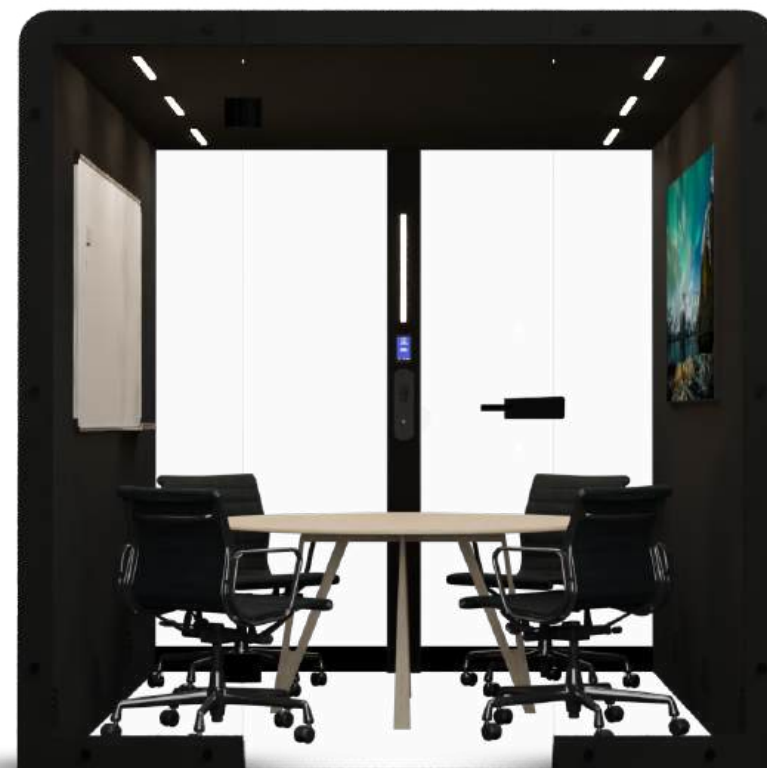
External fire extinguisher unit

Ethernet ports

Bluetooth speakers

Frosted film glass

Occupancy lights



FLOORLESS COLLECTION



Kteam 8 Floorless Booth

The Kteam 8 Floorless Booth is a versatile meeting space for eight individuals, combining superior sound insulation with a stylish design to create an inviting atmosphere for effective teamwork and discussions.



STANDARD FEATURES

- Class A noise reduction
- 100 air exchanges/hour
- Energy efficient
- BIFMA Level 2 approved
- ISO 14001, ISO 9001, MAS, UL/ULC certified
- Pre-engineered knockout hole for sprinklers
- Plug n Play

OCCUPANTS: 8
VISUAL PRIVACY: Low-Medium
ACOUSTIC PRIVACY: Medium-High

TECHNICAL INFO

Dimensions:

- Overall- W: 88" - D: 145" - H: 88"
- Inside- W: 80" - D: 144" - H: 84"
- Door - H: 88" x W: 32"
- Rear Panel - H: 88" x W: 44"
- Front Side Panels - H: 88" x W: 28"

Weight: 2600 lbs/1180 kg

Data Center: UL approved, 1 USB A port,
1 USB C port, 2 Simplex outlets
Motion detector (controls lights & fan)

- 10mm clear tempered glass
- Ceramic painted borders
- 12V LED light bar magnet, 3500k, 12VDC
- Galvanized steel frames
- 10ft cord 120v/15Amp

RANGE OF FINISHES

EXTERIOR



White



Black

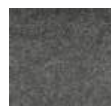
INTERIOR



EG-04 Silver Gray



EG-08 Moon Gray



EG-10 Deep Gray



EG-02 Water Gray

CARPET



Light Gray



Dark Gray



EG-20 Deep Blue



EG-23 Turquoise



EG-30 Dark Camel

ALUMINUM CORNERS



White



Black



Gray

DOOR HANDLE



Black



Silver

ADD ONs

Seismic bracing

One-touch LCD control panel

LCD TV mount bracing

White glass board

Personalized company branding

External fire extinguisher unit

Ethernet ports

Bluetooth speakers

Frosted film glass

Occupancy lights







Because privacy matters!

www.kubebooth.com | info@kubebooth.com

