



Because privacy matters!



# **Kubebooth**

## **Standing Offer Catalogue**

### **Government of Canada**

SO EP-929-230916 - Category 4



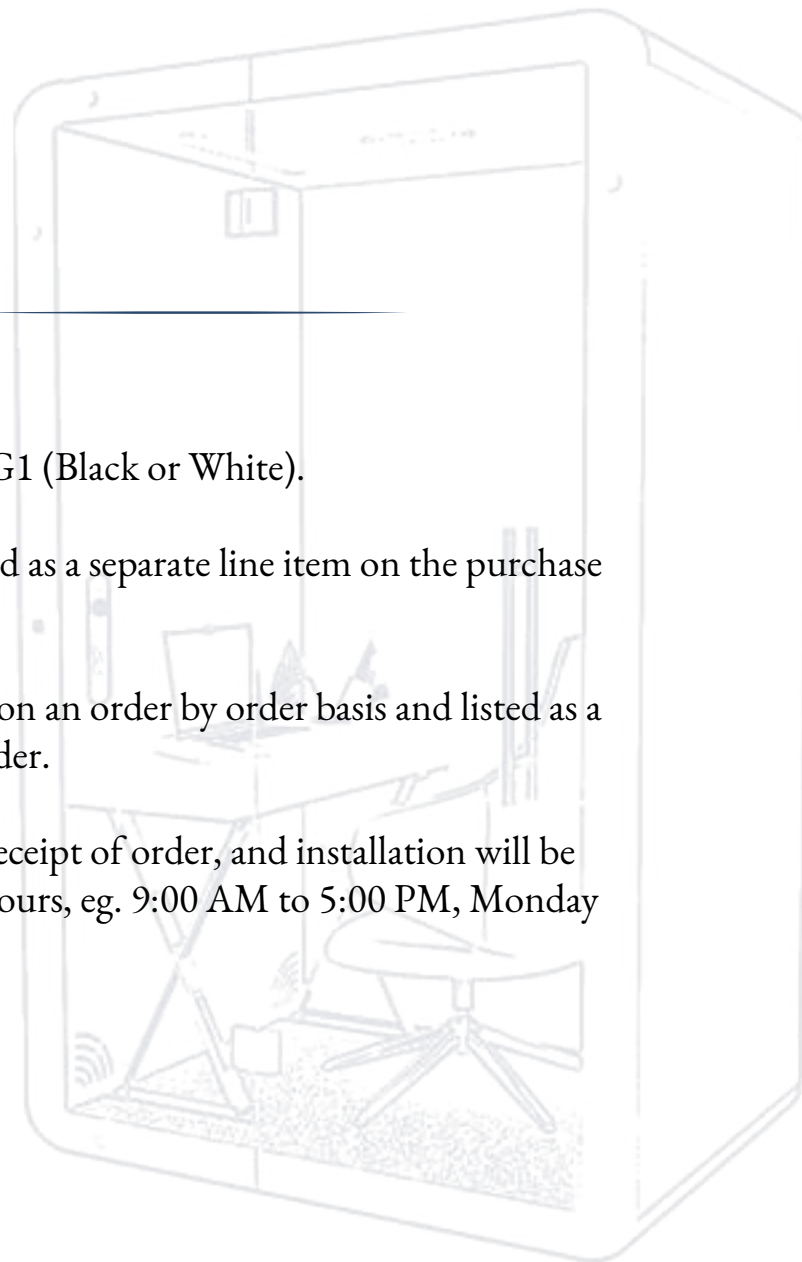
## PRODUCT INFO & ORDERING ITEMS

The exterior finish of all products is G1 (Black or White).

Freight delivery charges are to be listed as a separate line item on the purchase order.

Installation charges are to be quoted on an order by order basis and listed as a separate line item on the purchase order.

Delivery is stated as 3 -5 weeks after receipt of order, and installation will be carried out during normal working hours, eg. 9:00 AM to 5:00 PM, Monday through Friday.



**CALL UPS AGAINST THIS  
STANDING OFFER  
MUST BE ISSUED TO**

### **KUBEBOOTH INC.**

40 Penn Dr. , Toronto  
Ontario M9L 2A9  
www.kubebooth.com  
info@kubebooth.com

# AUTHORIZED KUBEBOOTH DEALERS

---



## ATLANTIC REGION

### **Atlantic Business Interiors**

#### **Nova Scotia**

30 Troop Avenue  
Dartmouth, Nova Scotia  
B3B 1Z1  
Phone: (902) 468-3200  
Fax: (902) 468-5051

#### **New Brunswick – Moncton**

Phone: (506) 866-6738

#### **New Brunswick – Saint John**

28 McIlveen Drive, Unit 12  
Saint John, New Brunswick  
E2J 4Y7  
Phone: (506) 672-0750  
Fax: (506) 674-1435

#### **Newfoundland and Labrador**

21 Mews Place  
St. John's, Newfoundland  
A1B 4N2  
Phone: (709) 576-6405  
Fax: (709) 576-6418

### **Atlantic Business Interiors**

#### **Prince Edward Island**

25 Fourth Street, Suite 400  
Charlottetown,  
Prince Edward Island  
C1E 2B4  
Phone: (902) 566-9700  
Fax: (902) 566-4978

## ONTARIO REGION

### **Contemporary Office Interiors**

#### **GTA Distribution Center**

Phone 416-364-5111  
Address 6225 Danville Road Mississauga,  
ON L5T2H7

#### **Toronto**

Phone 416-364-5111  
Address 56 Temperance St, 2nd Floor  
Toronto, ON M5H 3V5

### **The Business Line Inc.**

#### **GTA**

7282 Black Walnut Trail,  
Mississauga, ON, L5N 7M6  
Phone: (905) 785-8120  
Cell: (647) 401-8120  
Email: sam.paul@tbl.ca

## NATIONAL CAPITAL REGION

### **Brezach Solutions Inc.**

5380 Canotek Rd, Unit 11  
Ottawa, ON, K1J 1H7  
Phone: 613-742-0051  
Email: info@brezach.com

### **Capital Office Interiors**

16 Antares Drive  
Ottawa, Ontario  
K2E 7Y7  
Phone: (613) 723-2000

### **Sakku Ventures**

Phone: (613) 714-9990  
Email: sales@sakkuventures.ca



Ouvrages de référence →

# SIGNATURE COLLECTION



## KSelfi Glass Signature Booth

The KSelfi Signature Booth by Kubebooth is a premium soundproof solution designed for one person, perfect for virtual meetings, quick calls, and ad hoc discussions.



### STANDARD FEATURES

- 36 dB Certified noise reduction
- 100 air exchanges/hour
- Mobile with casters
- Energy efficient
- BIFMA Level 2 approved
- ISO 14001, ISO 9001, MAS, UL/ULC certified
- Pre-engineered knockout hole for sprinklers
- Plug n Play
- Worktop included W: 20" x L: 12"

**OCCUPANTS:** 1  
**VISUAL PRIVACY:** Low-Medium  
**ACOUSTIC PRIVACY:** High

### TECHNICAL INFO

#### Dimensions:

Overall- W: 44" - D: 37" - H: 88"

Inside- W: 36" - D: 36" - H: 80"

Door - H: 88" x W: 32"

Rear Panel - H: 88" x W: 44"

Front Side Panel - H: 88" x W: 12"

Weight: 800 lbs/362 kg

Data Center: UL approved, 1 USB A port,  
1 USB C port, 2 Simplex outlets  
Motion detector (controls lights & fan)

10mm clear tempered glass  
Ceramic painted borders  
12V LED light bar magnet, 3500k, 12VDC  
Galvanized steel frames  
10ft cord 120v/15Amp  
D pull handle

## RANGE OF FINISHES

### EXTERIOR



White



Black

### CARPET



Light Gray



Dark Gray

### DOOR HANDLE



Black



Silver

### INTERIOR



EG-04 Silver Gray



EG-08 Moon Gray



EG-10 Deep Gray



EG-02 Water Gray



EG-20 Deep Blue



EG-23 Turquoise



EG-30 Dark Camel

### ALUMINUM CORNERS



White



Black



Gray

### ADD ONs

Seismic bracing

One-touch LCD control panel

LCD TV mount bracing

White glass board

Personalized company branding

External fire extinguisher unit

Ethernet ports

Bluetooth speakers

Frosted film glass

Occupancy lights



# SIGNATURE COLLECTION



## KSelfi Laminate Signature Booth

The KSelfi Laminate Booth by Kubebooth offers a sleek, durable design with customizable finishes, providing a stylish and quiet space for focused work or private conversations.



### STANDARD FEATURES

- 36 dB Certified noise reduction
- 100 air exchanges/hour
- Mobile with casters
- Energy efficient
- BIFMA Level 2 approved
- ISO 14001, ISO 9001, MAS, UL/ULC certified
- Pre-engineered knockout hole for sprinklers
- Plug n Play
- Worktop included W: 20" x L: 12"

- OCCUPANTS:** 1
- VISUAL PRIVACY:** Low-Medium
- ACOUSTIC PRIVACY:** High

### TECHNICAL INFO

#### Dimensions:

- Overall- W: 44" - D: 37" - H: 88"
- Inside- W: 36" - D: 36" - H: 80"
- Door - H: 88" x W: 32"
- Front Side Panel - H: 88" x W: 12"

Weight: 754 lbs/342 kg

Data Center: UL approved, 1 USB A port, 1 USB C port, 2 Simplex outlets  
Motion detector (controls lights & fan)

- 10mm clear tempered glass
- Ceramic painted borders
- 12V LED light bar magnet, 3500k, 12VDC
- Galvanized steel frames
- 10ft cord 120v/15Amp
- D pull handle

## RANGE OF FINISHES

### EXTERIOR



White



Black

### CARPET



Light Gray



Dark Gray

### DOOR HANDLE



Black



Silver

### INTERIOR



EG-04 Silver Gray



EG-08 Moon Gray



EG-10 Deep Gray



EG-02 Water Gray



EG-20 Deep Blue

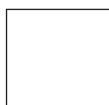


EG-23 Turquoise



EG-30 Dark Camel

### ALUMINUM CORNERS



White



Black



Gray

### ADD ONs

Seismic bracing  
 One-touch LCD control panel  
 LCD TV mount bracing  
 White glass board  
 Personalized company branding  
 External fire extinguisher unit

Ethernet ports  
 Bluetooth speakers  
 Frosted film glass  
 Occupancy lights





# SIGNATURE COLLECTION



## KSelfi 37 Laminate Signature Booth

The KSelfi 37 by Kubebooth is a single-person soundproof office pod designed to enhance productivity and well-being in the workplace. This compact booth provides enhanced private enclave for focused tasks, quick rejuvenation, or uninterrupted learning.

### STANDARD FEATURES

- 36 dB Certified noise reduction
- 100 air exchanges/hour
- Mobile with casters
- Energy efficient
- BIFMA Level 2 approved
- ISO 14001, ISO 9001, MAS, UL/ULC certified
- Pre-engineered knockout hole for sprinklers
- Plug n Play
- Worktop not included

**OCCUPANTS:** 1  
**VISUAL PRIVACY:** Low-Medium  
**ACOUSTIC PRIVACY:** High

### TECHNICAL INFO

#### Dimensions:

Overall- W: 58" - D: 37" - H: 88"

Inside- W: 50" - D: 36" - H: 80"

Door - H: 88" x W: 32"

Front Side Panel - H: 88" x W: 12"

Weight: 955 lbs/435 kg

Data Center: UL approved, 1 USB A port,  
1 USB C port, 2 Simplex outlets  
Motion detector (controls lights & fan)

10mm clear tempered glass

Ceramic painted borders

12V LED light bar magnet, 3500k, 12VDC

Galvanized steel frames

10ft cord 120v/15Amp

D pull handle



## RANGE OF FINISHES

### EXTERIOR



White



Black

### CARPET



Light Gray



Dark Gray

### DOOR HANDLE



Black



Silver

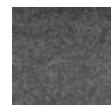
### INTERIOR



EG-04 Silver Gray



EG-08 Moon Gray



EG-10 Deep Gray



EG-02 Water Gray



EG-20 Deep Blue



EG-23 Turquoise



EG-30 Dark Camel

### ALUMINUM CORNERS



White



Black



Gray

### ADD ONs

Seismic bracing  
 One-touch LCD control panel  
 LCD TV mount bracing  
 White glass board  
 Personalized company branding  
 External fire extinguisher unit

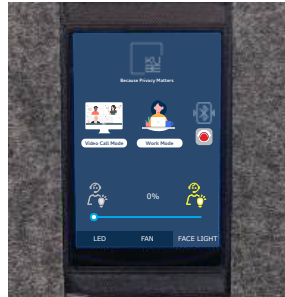
Ethernet ports  
 Bluetooth speakers  
 Frosted film glass  
 Occupancy lights



# ACCESSORIES



- TOUCHPAD WITH FACELIGHT CONTROL PANEL



Touchpad

- OCCUPANCY LIGHTS



Occupancy Lights

- SEISMIC BRACING

- LCD TV MOUNT BRACKET



LCD TV Mount Bracket

- WHITE GLASS BOARD

- ETHERNET PORTS

- PERSONALIZED COMPANY BRANDING

- BLUETOOTH SPEAKERS

- FROSTED FILM GLASS

- EXTERNAL FIRE EXTINGUISHER UNIT

- SMART DOOR LOCK\*  
(Only available on select units)



Smart Lock



Whiteboard



Bluetooth Speaker





Because privacy matters!

[www.kubebooth.com](http://www.kubebooth.com) | [info@kubebooth.com](mailto:info@kubebooth.com)

